

PRICING SUPPLEMENT

(To MTN prospectus supplement,
general prospectus supplement
and prospectus dated March 31, 2006)
Pricing Supplement Number: 2554



397,960 Units
Merrill Lynch & Co., Inc.
Medium-Term Notes, Series C
90% Protected Notes
Linked to the Gold Spot Price
due July 6, 2009
(the "Notes")
\$10 original public offering price per unit

The Notes:

- The Notes are designed for investors who are seeking exposure to the Gold Spot Price and are willing to forego interest payments on the Notes. Investors must also be willing to risk losing up to \$1.00 per unit of their investment if the Gold Spot Price depreciates or does not appreciate sufficiently over the term of the Notes.
- 90% principal protection on the maturity date.
- There will be no payments prior to the maturity date and we cannot redeem the Notes prior to the maturity date.
- The Notes will not be listed on any securities exchange.
- The Notes will be senior unsecured debt securities of Merrill Lynch & Co., Inc., denominated and payable in United States dollars, and part of a series entitled "Medium-Term Notes, Series C". The Notes will have the CUSIP No. 59021V235.
- The settlement date is expected to be July 6, 2006.

Payment on the maturity date:

- The amount you receive on the maturity date per unit will be based upon the direction of and percentage change in the Gold Spot Price over the term of the Notes. If the Gold Spot Price:
 - has increased, you will receive a payment per unit equal to \$9.00 plus a supplemental redemption amount equal to 86.5% of the percentage increase multiplied by \$10; or
 - has decreased or has not increased sufficiently, you will receive less than the \$10 original public offering price per unit, which results in a loss of some of your investment; in no event, however, will you receive less than \$9.00 per unit.
- The Gold Spot Price must increase by 11.56% in order for you to receive at least the \$10 original public offering price per unit.

Information included in this pricing supplement supersedes information in the accompanying MTN prospectus supplement, general prospectus supplement and prospectus to the extent that it is different from that information.

Investing in the Notes involves risks that are described in the "Risk Factors" section beginning on page PS-7 of this pricing supplement and page S-3 of the accompanying MTN prospectus supplement.

	<u>Per Unit</u>	<u>Total</u>
Public offering price (1)	\$ 10.00	\$ 3,979,600
Underwriting discount (1)	\$.20	\$ 79,592
Proceeds, before expenses, to Merrill Lynch & Co., Inc.	\$ 9.80	\$ 3,900,008

- (1) The public offering price and the underwriting discount for any single transaction to purchase between 100,000 to 299,999 units will be \$9.95 per unit and \$.15 per unit, respectively, for any single transaction to purchase between 300,000 to 499,999 units will be \$9.90 per unit and \$.10 per unit, respectively, and for any single transaction to purchase 500,000 units or more will be \$9.85 per unit and \$.05 per unit, respectively.

Neither the Securities and Exchange Commission nor any state securities commission has approved or disapproved of these securities or determined if this pricing supplement or the accompanying MTN prospectus supplement, general prospectus supplement and prospectus is truthful or complete. Any representation to the contrary is a criminal offense.

Merrill Lynch & Co.

The date of this pricing supplement is June 29, 2006.

TABLE OF CONTENTS

Pricing Supplement

	<u>Page</u>
SUMMARY INFORMATION—Q&A	PS-3
RISK FACTORS	PS-7
DESCRIPTION OF THE NOTES	PS-11
THE GOLD SPOT PRICE AND THE LONDON GOLD P.M. FIXING	PS-14
UNITED STATES FEDERAL INCOME TAXATION	PS-16
ERISA CONSIDERATIONS	PS-20
USE OF PROCEEDS AND HEDGING	PS-21
SUPPLEMENTAL PLAN OF DISTRIBUTION	PS-21
EXPERTS	PS-21
INDEX OF CERTAIN DEFINED TERMS	PS-22

Medium-Term Notes, Series C Prospectus Supplement (the “MTN prospectus supplement”)

	<u>Page</u>
RISK FACTORS	S-3
DESCRIPTION OF THE NOTES	S-4
UNITED STATES FEDERAL INCOME TAXATION	S-22
PLAN OF DISTRIBUTION	S-29
VALIDITY OF THE NOTES	S-30

Debt Securities, Warrants, Preferred Stock, Depository Shares and Common Stock Prospectus Supplement (the “general prospectus supplement”)

	<u>Page</u>
MERRILL LYNCH & CO., INC.	S-3
USE OF PROCEEDS	S-3
RATIO OF EARNINGS TO FIXED CHARGES AND RATIO OF EARNINGS TO COMBINED FIXED CHARGES AND PREFERRED STOCK DIVIDENDS	S-4
THE SECURITIES	S-4
DESCRIPTION OF DEBT SECURITIES	S-5
DESCRIPTION OF DEBT WARRANTS	S-16
DESCRIPTION OF CURRENCY WARRANTS	S-18
DESCRIPTION OF INDEX WARRANTS	S-20
DESCRIPTION OF PREFERRED STOCK	S-25
DESCRIPTION OF DEPOSITARY SHARES	S-32
DESCRIPTION OF PREFERRED STOCK WARRANTS	S-36
DESCRIPTION OF COMMON STOCK	S-38
DESCRIPTION OF COMMON STOCK WARRANTS	S-42
PLAN OF DISTRIBUTION	S-44
WHERE YOU CAN FIND MORE INFORMATION	S-45
INCORPORATION OF INFORMATION WE FILE WITH THE SEC	S-46
EXPERTS	S-46

Prospectus

	<u>Page</u>
WHERE YOU CAN FIND MORE INFORMATION	2
INCORPORATION OF INFORMATION WE FILE WITH THE SEC	2
EXPERTS	2

SUMMARY INFORMATION—Q&A

This summary includes questions and answers that highlight selected information from this pricing supplement and the accompanying MTN prospectus supplement, general prospectus supplement and prospectus to help you understand the 90% Protected Notes Linked to the Gold Spot Price due July 6, 2009 (the “Notes”). You should carefully read this pricing supplement and the accompanying MTN prospectus supplement, general prospectus supplement and prospectus to fully understand the terms of the Notes, the Gold Spot Price and the tax and other considerations that are important to you in making a decision about whether to invest in the Notes. You should carefully review the “Risk Factors” section in this pricing supplement and the accompanying MTN prospectus supplement, which highlights certain risks associated with an investment in the Notes, to determine whether an investment in the Notes is appropriate for you.

References in this pricing supplement to “ML&Co.,” “we,” “us” and “our” are to Merrill Lynch & Co., Inc. and references to “MLPF&S” are to Merrill Lynch, Pierce, Fenner & Smith Incorporated.

What are the Notes?

The Notes will be part of a series of senior debt securities issued by ML&Co. entitled “Medium-Term Notes, Series C” and will not be secured by collateral. The Notes will rank equally with all of our other unsecured and unsubordinated debt. The Notes will mature on July 6, 2009. We will not make any payments on the Notes until the maturity date.

Each unit will represent a single Note with a \$10 original public offering price. You may transfer the Notes only in whole units. You will not have the right to receive physical certificates evidencing your ownership except under limited circumstances. Instead, we will issue the Notes in the form of a global certificate, which will be held by The Depository Trust Company, also known as DTC, or its nominee. Direct and indirect participants in DTC will record your ownership of the Notes. You should refer to the section entitled “Description of the Debt Securities—Depository” in the accompanying general prospectus supplement.

Are there any risks associated with my investment?

Yes, an investment in the Notes is subject to risks, including the risk of loss of principal. Please refer to the section entitled “Risk Factors” in this pricing supplement and the accompanying MTN prospectus supplement.

Who determines the Gold Spot Price and what does the Gold Spot Price reflect?

The Gold Spot Price is a benchmark price used in markets where gold is sold for cash and delivered immediately and is used in the determination of the Supplemental Redemption Amount as described below.

The London Gold P.M. Fixing is an internationally published benchmark for gold. The London Gold P.M. Fixing is the Gold Spot Price in United States dollars at approximately 3:00 p.m. London time, determined by five members of the London Bullion Market Association (the “LBMA”), as described more fully in the section entitled “The Gold Spot Price and the London Gold P.M. Fixing” in this pricing supplement.

Please note that an investment in the Notes does not entitle you to any ownership interest, either directly or indirectly, in gold.

The Notes are not sponsored, endorsed, sold or promoted by the LBMA. The LBMA takes no responsibility for the accuracy and/or the completeness of information provided in this pricing supplement or the accompanying MTN prospectus supplement, general prospectus supplement or prospectus. In addition, the LBMA is not responsible for and has not participated in the determination of the timing of the sale of the Notes, prices at which the Notes are to initially be sold, or quantities of the Notes to be issued or in the determination or calculation of the equation by which the Notes are to be converted to cash. The LBMA has no obligation in connection with the administration, marketing or trading of the Notes.

How has the Gold Spot Price performed historically?

We have included a table and a graph showing the historical month-end London Gold P.M. Fixings as published from January 2001 to May 2006. We have also included a graph showing the historical year-end London Gold P.M. Fixings as published from 1972 to 2005. We have provided this historical information to help you evaluate the behavior of the Gold Spot Price in various economic environments; however, past performance of the London Gold P.M. Fixings is not necessarily indicative of how the London Gold P.M. Fixings or the Gold Spot Price will perform in the future.

What will I receive on the maturity date of the Notes?

On the maturity date, for each unit of the Notes that you own, you will receive a cash payment equal to the sum of two amounts: the “Minimum Redemption Amount” and the “Supplemental Redemption Amount”, if any.

The “**Minimum Redemption Amount**” per unit is \$9.00.

The “**Supplemental Redemption Amount**” per unit will equal:

$$\$10 \times \text{Participation Rate} \times \left(\frac{\text{Ending Value} - \text{Starting Value}}{\text{Starting Value}} \right)$$

but will not be less than zero.

As a result of the foregoing, the Gold Spot Price will need to increase by 11.56% from the Starting Value in order for you to receive an amount on the maturity date equal to the \$10 original public offering price per unit. If the Gold Spot Price decreases or does not increase sufficiently, you will receive less than the \$10 original public offering price per unit. In no event, however, will you receive less than \$9.00 per unit.

The “**Starting Value**” equals \$589.25, the Gold Spot Price in United States dollars determined at 3:00 p.m., London time (the **London Gold P.M. Fixing**) and subsequently published by the LBMA on the day the Notes were priced for initial sale to the public (the “**Pricing Date**”).

The “**Ending Value**” means the average of the London Gold P.M. Fixing on five business days shortly before the maturity date of the Notes. The Calculation Agent (as defined herein) may calculate the Ending Value by reference to fewer than five or even a single day’s London Gold P.M. Fixing if, during the period shortly before the maturity date of the Notes, the London Gold P.M. Fixing is not published or otherwise available, as described in this pricing supplement.

The “**Participation Rate**” is 86.5%.

For more specific information about the amount payable on the maturity date, please see the section entitled “Description of the Notes” in this pricing supplement.

Will I receive interest payments on the Notes?

You will not receive any interest payments on the Notes, but you will receive the Minimum Redemption Amount plus the Supplemental Redemption Amount, if any, on the maturity date. We have designed the Notes for investors who are willing to forego interest payments on the Notes, such as fixed or floating interest rates paid on traditional interest bearing debt securities and willing to accept the risk of receiving less than the principal amount of their Notes on the maturity date, in exchange for the ability to participate in changes in the level of the Gold Spot Price over the term of the Notes.

Examples

Set forth below are three examples of Supplemental Redemption Amount calculations, including a Starting Value of \$589.25 and a Participation Rate of 86.5%.

Example 1—The hypothetical Ending Value is 30% lower than the Starting Value:

Minimum Redemption Amount: \$9.00

Starting Value: \$589.25

Hypothetical Ending Value: \$412.48

$$\text{Supplemental Redemption Amount (per unit)} = \$10 \times 86.5\% \times \left(\frac{412.48 - 589.25}{589.25} \right) = \$0.00 \quad \begin{array}{l} \text{(Supplemental} \\ \text{Redemption} \\ \text{Amount cannot} \\ \text{be less than zero)} \end{array}$$

Total payment on the maturity date (per unit) = \$9.00 + \$0.00 = \$9.00

Example 2—The hypothetical Ending Value is 5% higher than the Starting Value:

Minimum Redemption Amount: \$9.00

Starting Value: \$589.25

Hypothetical Ending Value: \$618.71

$$\text{Supplemental Redemption Amount (per unit)} = \$10 \times 86.5\% \times \left(\frac{618.71 - 589.25}{589.25} \right) = \$0.4325$$

Total payment on the maturity date (per unit) = \$9.00 + \$0.4325 = \$9.4325

Example 3—The hypothetical Ending Value is 30% higher than the Starting Value:

Minimum Redemption Amount: \$9.00

Starting Value: \$589.25

Hypothetical Ending Value: \$766.03

$$\text{Supplemental Redemption Amount (per unit)} = \$10 \times 86.5\% \times \left(\frac{766.03 - 589.25}{589.25} \right) = \$2.5951$$

Total Payment on the maturity date (per unit) = \$9.00 + \$2.5951 = \$11.5951

What about taxes?

Each year, you will be required to pay taxes on ordinary income from the Notes over their term based upon an estimated yield for the Notes, even though you will not receive any payments from us until the maturity date. We have determined this estimated yield, in accordance with regulations issued by the U.S. Treasury Department, solely in order for you to calculate the amount of taxes that you will owe each year as a result of owning a Note. This estimated yield is neither a prediction nor a guarantee of what the actual amount payable on the maturity date will be, or that the actual amount payable on the maturity date will even exceed \$9.00 per unit of the Notes. We have determined that this estimated yield will equal 5.71% per annum, compounded semi-annually.

Based upon this estimated yield, if you pay your taxes on a calendar year basis and if you purchase a Note for \$10.00 per unit and hold the Note until the maturity date, you will be required to pay taxes on the following amounts of ordinary income from the Note each year: \$0.2786 in 2006, \$0.5953 in 2007, \$0.6297 in 2008 and \$0.3392 in 2009. However, in 2009, the amount of ordinary income that you will be required to pay taxes on from owning each Note may be greater or less than \$0.3392, depending upon the actual amount you receive on the maturity date. Also, if the actual amount you receive on the maturity date is less than \$11.8428, you may have a loss which you could deduct against other income you may have in 2009, but under current tax regulations, you would neither be required nor allowed to amend your tax returns for prior years. For further information, see "United States Federal Income Taxation" in this pricing supplement.

Will the Notes be listed on a securities exchange?

The Notes will not be listed on any securities exchange and we do not expect a trading market for the Notes to develop, which may affect the price that you receive for your Notes upon any sale prior to the maturity date. You should review the section entitled "Risk Factors—A trading market for the Notes is not expected to develop and if trading does develop, the market price

you may receive or be quoted for your Notes on a date prior to the stated maturity date will be affected by this and other important factors including our costs of developing, hedging and distributing the Notes” in this pricing supplement.

What price can I expect to receive if I sell the Notes prior to the stated maturity date?

In determining the economic terms of the Notes, and consequently the potential return on the Notes to you, a number of factors are taken into account. Among these factors are certain costs associated with creating, hedging and offering the Notes. In structuring the economic terms of the Notes, we seek to provide investors with what we believe to be commercially reasonable terms and to provide MLPF&S with compensation for its services in developing the Notes.

If you sell your Notes prior to the stated maturity date, you will receive a price determined by market conditions for the Notes. This price may be influenced by many factors, such as interest rates, volatility of the Gold Spot Price and the current Gold Spot Price. In addition, the price, if any, at which you could sell your Notes in a secondary market transaction is expected to be affected by the factors that we considered in setting the economic terms of the Notes, namely the underwriting discount paid in respect of the Notes and other costs associated with the Notes, and compensation for developing and hedging the product. Depending on the impact of these factors, you may receive significantly less than the \$10 original public offering price per unit of your Notes if sold before the stated maturity date.

In a situation where there had been no movement in the Gold Spot Price and no changes in the market conditions from those existing on the date of this pricing supplement, the price, if any, at which you could sell your Notes in a secondary market transaction is expected to be lower than the \$10 original public offering price per unit. This is due to, among other things, our costs of developing, hedging and distributing the Notes. Any potential purchasers for your Notes in the secondary market are unlikely to consider these factors.

What is the role of MLPF&S?

Our subsidiary MLPF&S is the underwriter for the offering and sale of the Notes. After the initial offering, MLPF&S currently intends to buy and sell Notes to create a secondary market for holders of the Notes, and may stabilize or maintain the market price of the Notes during their initial distribution. However, MLPF&S will not be obligated to engage in any of these market activities or continue them once it has started.

MLPF&S will also be our agent for purposes of calculating, among other things, the Ending Value and the Supplemental Redemption Amount (in such capacity, the “**Calculation Agent**”). Under certain circumstances, these duties could result in a conflict of interest between MLPF&S as our subsidiary and its responsibilities as Calculation Agent.

What is ML&Co.?

Merrill Lynch & Co., Inc. is a holding company with various subsidiaries and affiliated companies that provide investment, financing, insurance and related services on a global basis.

For information about ML&Co., see the section entitled “Merrill Lynch & Co., Inc.” in the accompanying general prospectus supplement. You should also read other documents ML&Co. has filed with the Securities and Exchange Commission, which you can find by referring to the sections entitled “Where You Can Find More Information” in the accompanying general prospectus supplement and prospectus.

RISK FACTORS

Your investment in the Notes will involve risks. You should carefully consider the following discussion of risks and the discussion of risks included in the accompanying MTN prospectus supplement before deciding whether an investment in the Notes is suitable for you.

Your investment may result in a loss

We will not repay you a fixed amount on the Notes at maturity. The payment you receive on the maturity date on the Notes will depend on the change in the Gold Spot Price. Because the Gold Spot Price is subject to market fluctuations, the amount of cash you receive on the maturity date may be more or less than the \$10 original public offering price per unit. If the Gold Spot Price has not increased by at least 11.56% above the Starting Value, the amount you receive on the maturity date will be less than the \$10 original public offering price per unit. As a result, you will lose some of your investment in the Notes. Even if the Ending Value is greater than the Starting Value, the increase in the Gold Spot Price may not be sufficient for the amount that you will receive on the maturity date to exceed the \$10 original public offering price per unit. The amount you receive on the maturity date will, however, never be less than \$9.00 per unit.

Your yield may be lower than the yield on other debt securities of comparable maturity

The yield that you will receive on your Notes may be less than the return you could earn on other investments. Your yield may be less than the yield you would earn if you bought a traditional interest bearing United States dollar-denominated debt security of ML&Co. with the same stated maturity date. Your investment may not reflect the full opportunity cost to you when you take into account factors that affect the time value of money.

You must rely on your own evaluation of the merits of an investment linked to gold

In the ordinary course of their businesses, affiliates of ML&Co. from time to time express views on expected movements in the price of gold. These views are sometimes communicated to clients who participate in gold or precious metal markets. However, these views, depending upon world-wide economic, political and other developments, may vary over differing time-horizons and are subject to change. Moreover, other professionals who deal in gold or precious metals may at any time have significantly different views from those of our affiliates. For reasons such as these, we believe that most investors in gold or precious metal markets derive information concerning those markets from multiple sources. In connection with your purchase of the Notes, you should investigate the gold and precious markets and not rely on views which may be expressed by our affiliates in the ordinary course of their businesses with respect to future gold price movements.

You should make such investigation as you deem appropriate as to the merits of an investment linked to the Gold Spot Price. Neither the offering of the Notes nor any views which may from time to time be expressed by our affiliates in the ordinary course of their businesses with respect to future gold price movements constitutes a recommendation as to the merits of an investment in the Notes.

A trading market for the Notes is not expected to develop and if trading does develop, the market price you may receive or be quoted for your Notes on a date prior to the stated maturity date will be affected by this and other important factors including our costs of developing, hedging and distributing the Notes

The Notes will not be listed on any securities exchange and we do not expect a trading market for the Notes to develop. Although our affiliate MLPF&S has indicated that it currently expects to bid for Notes offered for sale to it by holders of the Notes, it is not required to do so and may cease making those bids at any time. In addition, while we describe in this pricing supplement how you can determine the Gold Spot Price from publicly available information, we will not publish the Gold Spot Price over the term of the Notes and this may limit the trading market for the Notes. The limited trading market for your Notes may affect the price that you receive for your Notes if you do not wish to hold your investment until the maturity date.

If MLPF&S makes a market in the Notes, the price it quotes would reflect any changes in market conditions and other relevant factors. In addition, the price, if any, at which you could sell your Notes in a secondary market transaction is expected to be affected by the factors that we considered in setting the economic terms of the Notes, namely the underwriting discount paid in respect of the Notes and other costs associated with the Notes, including compensation for developing and hedging the product. This quoted price could be higher or lower than the \$10 original public offering price. Furthermore, there is no assurance that MLPF&S or any other party will be willing to buy the Notes. MLPF&S is not obligated to make a market in the Notes.

Assuming there is no change in the Gold Spot Price and no change in market conditions or any other relevant factors, the price, if any, at which MLPF&S or another purchaser might be willing to purchase your Notes in a secondary market transaction is expected to be lower than the \$10 original public offering price. This is due to, among other things, the fact that the \$10 original public offering price included, and secondary market prices are likely to exclude, underwriting discount paid with respect to, and the developing and hedging costs associated with, the Notes.

There are risks associated with investing in gold

The commodity markets, including the gold markets, are generally subject to temporary distortions or other disruptions due to various factors, including the lack of liquidity in the markets, the participation of speculators, and government regulation and intervention.

The Gold Spot Price is derived from a principals' market which operates as an over-the-counter physical commodity market. Certain features of U.S. futures markets are not present in the context of trading on such principals' markets. For example, there are no daily price limits, which would otherwise restrict the extent of daily fluctuations in the prices of the commodities in such markets. In a declining market, therefore, it is possible that prices would continue to decline without limitation within a trading day or over a period of trading days.

Gold prices are subject to volatile price movements over short periods of time and are affected by numerous factors. These include economic factors, including, among other things the structure of and confidence in the global monetary system, expectations of the future rate of inflation, the relative strength of, and confidence in, the U.S. dollar (the currency in which the price of gold is generally quoted), interest rates and gold borrowing and lending rates, and global or regional economic, financial, political, regulatory, judicial or other events. Gold prices may also be affected by industry factors such as industrial and jewelry demand, lending, sales and purchases of gold by the official sector, including central banks and other governmental agencies and multilateral institutions which hold gold, levels of gold production and production costs, and short-term changes in supply and demand because of trading activities in the gold market. It is not possible to predict the aggregate effect of all or any combination of these factors.

Changes in the methodology used to calculate the London Gold P.M. Fixing or changes in laws or regulations may affect the Supplemental Redemption Amount

The LBMA may from time to time change any rule or bylaw or take emergency action under its rules, any of which could affect the London Gold P.M. Fixing. Any such change could cause a decrease in the London Gold P.M. Fixing, which would adversely affect the Supplemental Redemption Amount, if any, and the value of the Notes.

In addition, the price of gold could be adversely affected by the promulgation of new laws or regulations or by the reinterpretation of existing laws or regulations (including, without limitation, those relating to taxes and duties on commodities or commodity components) by one or more governments, governmental agencies or instrumentalities, courts or other official bodies. Any such event could adversely affect the Gold Spot Price and, correspondingly, could adversely affect the Supplemental Redemption Amount, if any, and the value of the Notes.

Lack of Regulation by the CFTC

The Notes are debt securities that are direct obligations of ML&Co. The net proceeds to be received by ML&Co. from the sale of the Notes will not be used to purchase or sell gold on the London bullion market for the benefit of holders of the Notes. An investment in the Notes does not constitute either an investment in gold or in a collective investment vehicle that trades in gold. Unlike an investment in the Notes, an investment in a collective investment vehicle that invests in commodities on behalf of its participants may be regulated as a commodity pool and its operator may be required to be registered with and regulated by the Commodity Futures Trading Commission ("CFTC") as a "commodity pool operator" ("CPO"). Because the Notes are not interests in a commodity pool, the Notes will not be regulated by the CFTC as a commodity pool, ML&Co. will not be registered with the CFTC as a CPO, and holders of the Notes will not benefit from the CFTC's or any non-U.S. regulatory authority's regulatory protections afforded to persons who trade in commodities or who invest in regulated commodity pools.

Many factors affect the trading value of the Notes; these factors interrelate in complex ways and the effect of any one factor may offset or magnify the effect of another factor

The trading value of the Notes will be affected by factors that interrelate in complex ways. The effect of one factor may offset the increase in the trading value of the Notes caused by another factor and the effect of one factor may exacerbate the decrease in the trading value of the Notes caused by another factor. For example, a change in the volatility of The Gold Spot Price may offset some or all of any increase in the trading value of the Notes attributable to another factor, such as an

increase in the level of the Gold Spot Price. The following paragraphs describe the expected impact on the trading value of the Notes given a change in a specific factor, assuming all other conditions remain constant.

The Gold Spot Price is expected to affect the trading value of the Notes. We expect that the trading value of the Notes will depend substantially on the amount, if any, by which the Gold Spot Price exceeds or does not exceed the Starting Value. However, if you choose to sell your Notes when the Gold Spot Price exceeds the Starting Value, you may receive substantially less than the amount that would be payable on the maturity date based on this value because of the expectation that the Gold Spot Price will continue to fluctuate until the Ending Value is determined.

Changes in the levels of interest rates are expected to affect the trading value of the Notes. We expect that changes in interest rates will affect the trading value of the Notes. In general, if U.S. interest rates increase, we expect that the trading value of the Notes will decrease and, conversely, if U.S. interest rates decrease, we expect that the trading value of the Notes will increase.

Suspensions or disruptions of gold trading may adversely affect the value of the Notes. The precious metals markets are subject to temporary distortions or other disruptions due to various factors, including the lack of liquidity in the markets, the participation of speculators and government regulation and intervention. These circumstances could adversely affect the value of the Notes.

Changes in the volatility of the Gold Spot Price are expected to affect the trading value of the Notes. Volatility is the term used to describe the size and frequency of price and/or market fluctuations. If the volatility of the Gold Spot Price increases or decreases, the trading value of the Notes may be adversely affected.

As the time remaining to the stated maturity date of the Notes decreases, the "time premium" associated with the Notes is expected to decrease. We anticipate that before their stated maturity date, the Notes may trade at a value above that which would be expected based on the Gold Spot Price. This difference will reflect a "time premium" due to expectations concerning the Gold Spot Price prior to the stated maturity date of the Notes. However, as the time remaining to the stated maturity date of the Notes decreases, we expect that this time premium will decrease, lowering the trading value of the Notes.

Changes in our credit ratings may affect the trading value of the Notes. Our credit ratings are an assessment of our ability to pay our obligations. Consequently, real or anticipated changes in our credit ratings may affect the trading value of the Notes. However, because the return on your Notes is dependent upon factors in addition to our ability to pay our obligations under the Notes, such as the percentage increase, if any, in the Gold Spot Price over the term of the Notes, an improvement in our credit ratings will not reduce the other investment risks related to the Notes.

In general, assuming all relevant factors are held constant, we expect that the effect on the trading value of the Notes of a given change in some of the factors listed above will be less if it occurs later in the term of the Notes than if it occurs earlier in the term of the Notes. We expect, however, that the effect on the trading value of the Notes of a given change in the Gold Spot Price will be greater if it occurs later in the term of the Notes than if it occurs earlier in the term of the Notes.

Amounts payable on the Notes may be limited by state law

New York State law governs the 1983 Indenture under which the Notes will be issued. New York has usury laws that limit the amount of interest that can be charged and paid on loans, which includes debt securities like the Notes. Under present New York law, the maximum rate of interest is 25% per annum on a simple interest basis. This limit may not apply to debt securities in which \$2,500,000 or more has been invested.

While we believe that New York law would be given effect by a state or federal court sitting outside of New York, many other states also have laws that regulate the amount of interest that may be charged to and paid by a borrower. We will promise, for the benefit of the holders of the Notes, to the extent permitted by law, not to voluntarily claim the benefits of any laws concerning usurious rates of interest.

Potential conflicts of interest could arise

Our subsidiary MLPF&S is our agent for the purposes of calculating the Ending Value and the Supplemental Redemption Amount, if any. Under certain circumstances, MLPF&S as our subsidiary and its responsibilities as Calculation Agent for the Notes could give rise to conflicts of interest. These conflicts could occur, for instance, in connection with judgments that it would be required to make in the event of a discontinuance or unavailability of the London Gold P.M. Fixing. MLPF&S is required to carry out its duties as Calculation Agent in good faith and using its reasonable judgment. However, because we control MLPF&S, potential conflicts of interest could arise.

We expect to enter into arrangements to hedge the market risks associated with our obligation to pay the Minimum Redemption Amount and Supplemental Redemption Amount, if any, due on the maturity date on the Notes. We may seek competitive terms in entering into the hedging arrangements for the Notes, but are not required to do so, and we may enter into such hedging arrangements with one of our subsidiaries or affiliated companies. Such hedging activity is expected to result in a profit to those engaging in the hedging activity, which could be more or less than initially expected, but which could also result in a loss for the hedging counterparty.

Tax consequences

You should consider the tax consequences of investing in the Notes. See the section entitled "United States Federal Income Taxation" in this pricing supplement.

DESCRIPTION OF THE NOTES

ML&Co. will issue the Notes as part of a series of senior debt securities entitled “Medium-Term Notes, Series C” under the 1983 Indenture, which is more fully described in the accompanying general prospectus supplement. The Notes will mature on July 6, 2009. Information included in this pricing supplement supersedes information in the accompanying MTN prospectus supplement, general prospectus supplement and prospectus to the extent that it is different from that information. The CUSIP number for the Notes is 59021V235.

The Notes will not be subject to redemption by ML&Co. or at the option of any holder of the Notes before the maturity date.

ML&Co. will issue the Notes in denominations of whole units each with a \$10 original public offering price per unit. You may transfer the Notes only in whole units. You will not have the right to receive physical certificates evidencing your ownership except under limited circumstances. Instead, we will issue the Notes in the form of a global certificate, which will be held by The Depository Trust Company, also known as DTC, or its nominee. Direct and indirect participants in DTC will record your ownership of the Notes. You should refer to the section entitled “Description of Debt Securities—Depository” in the accompanying general prospectus supplement.

The Notes will not have the benefit of any sinking fund.

Payment on the Maturity Date

On the maturity date, you will be entitled to receive a cash payment per unit equal to the Minimum Redemption Amount plus a Supplemental Redemption Amount, if any, as provided below.

Determination of the Redemption Amount

The “Minimum Redemption Amount” for a Note is \$9.00.

The “Supplement Redemption Amount” for a Note will be determined by the Calculation Agent and will equal:

$$\$10 \times \text{Participation Rate} \times \left(\frac{\text{Ending Value} - \text{Starting Value}}{\text{Starting Value}} \right)$$

provided, however, that in no event will the Supplemental Redemption Amount be less than zero.

The “Starting Value” equals \$589.25, the Gold Spot Price in United States dollars determined at 3:00 p.m., London time (the “London Gold P.M. Fixing”) and subsequently published by the LBMA on the day the Notes were priced for initial sale to the public (the “Pricing Date”).

The “Ending Value” will be determined by the Calculation Agent and will equal the average of the London Gold P.M. Fixings determined on each of the five Calculation Days during the Calculation Period. If there are fewer than five Calculation Days during the Calculation Period, then the Ending Value will equal the average of the London Gold P.M. Fixings on those Calculation Days. If there is only one Calculation Day during the Calculation Period, then the Ending Value will equal the London Gold P.M. Fixing on that Calculation Day. If no Calculation Days occur during the Calculation Period, then the Ending Value will equal the Gold Spot Price at 3:00 p.m. London time as quoted by another publicly available source, selected by the Calculation Agent in its reasonable judgment, on the last scheduled Business Day in the Calculation Period, or, if such other source is available, as determined by the Calculation Agent in its sole discretion and in good faith. If the London Gold P.M. Fixing is not available, the Calculation Agent may select an alternative source to determine the Gold Spot Price.

The “**Calculation Period**” means the period from and including the seventh scheduled Business Day before the maturity date to and including the second scheduled Business Day before the maturity date.

A “**Calculation Day**” means any Business Day during the Calculation Period on which a disruption in the market has not occurred.

The “Participation Rate” is 86.5%.

A “**Business Day**” means any day which commercial banks are open for business in London and New York, the London bullion market is open for trading and the London Gold P.M. Fixing is determined and published.

All determinations made by the Calculation Agent, absent a determination of a manifest error, will be conclusive for all purposes and binding on ML&Co. and the holders and beneficial owners of the Notes.

Hypothetical Returns

The following table illustrates, for the Starting Value of \$589.25 and a range of hypothetical Ending Values of the Gold Spot Price:

- the percentage change from the Starting Value to the hypothetical Ending Value;
- the total amount payable on the maturity date per unit;
- the total rate of return to holders of the Notes;
- the pretax annualized rate of return to holders of the Notes; and
- the pretax annualized rate of return in United States dollars on an investment in the spot price of gold, which includes an assumed 1-year lease rate for gold of 0.15% per annum, as more fully described below.

The table below includes a Participation Rate of 86.5%.

Hypothetical Ending Value	Percentage change from the Starting Value to the hypothetical Ending Value	Total amount payable on the maturity date per unit	Total rate of return on the Notes	Pretax Annualized rate of return on the Notes(1)	Pretax Annualized rate of return on the spot price of gold (1)(2)
294.625	-50%	9.0000	-10.00%	-3.48%	-21.59%
353.550	-40%	9.0000	-10.00%	-3.48%	-16.12%
412.475	-30%	9.0000	-10.00%	-3.48%	-11.36%
471.400	-20%	9.0000	-10.00%	-3.48%	-7.13%
530.325	-10%	9.0000	-10.00%	-3.48%	-3.32%
589.788	-5%	9.0000	-10.00%	-3.48%	-1.55%
589.250(3)	0%	9.0000	-10.00%	-3.48%	0.15%
618.713	5%	9.4325	-5.68%	-1.94%	1.78%
648.175	10%	9.8650	-1.35%	-0.45%	3.35%
707.100	20%	10.7300	7.30%	2.36%	6.31%
766.025	30%	11.5950	15.95%	4.99%	9.07%
824.950	40%	12.4600	24.60%	7.46%	11.66%
883.875	50%	13.3250	33.25%	9.79%	14.10%

- (1) The annualized rates of return specified in this column are calculated on a semiannual bond equivalent basis and assume an investment term from July 6, 2006 to July 6, 2009, a term expected to be equal to that of the Notes.
- (2) This rate of return assumes
- a percentage change in the aggregate price of the spot price of gold that equals the percentage change in the Gold Spot Price from the Starting Value to the relevant hypothetical Ending Value;
 - a constant lease rate of 0.15% per annum, paid quarterly from the date of initial delivery of the Notes, applied to the Gold Spot Price at the end of each quarter assuming this value increases or decreases linearly from the Starting Value to the applicable hypothetical Ending Value; and
 - no transaction fees or expenses.
- (3) This is the Starting Value.

The above figures are for purposes of illustration only. The actual amount received by you and the resulting total and pretax annualized rates of return will depend on the actual Ending Value and term of your investment.

Events of Default and Acceleration

In case an Event of Default with respect to any Notes has occurred and is continuing, the amount payable to a holder of the Notes upon any acceleration permitted by the Notes, with respect to each unit of the Notes, will be equal to the Minimum Redemption Amount and Supplemental Redemption Amount, if any, calculated as though the date of acceleration were the stated maturity date of the Notes.

In case of default in payment of the Notes, whether on the stated maturity date or upon acceleration, from and after that date the Notes will bear interest, payable upon demand of their holders, at the then current Federal Funds Rate, reset daily, determined as described in the accompanying MTN prospectus supplement, to the extent that payment of such interest shall be legally enforceable, on the unpaid amount due and payable on that date in accordance with the terms of the Notes to the date payment of that amount has been made or duly provided for.

THE GOLD SPOT PRICE AND THE LONDON GOLD P.M. FIXING

The Gold Spot Price is a benchmark price used in the markets where gold is sold for cash and delivered immediately. The Gold Spot Price is published by Bloomberg L.P. (“Bloomberg”) under the symbol GOLDS. London Gold P.M. Fixing, is an internationally published benchmark of the Gold Spot Price in United States dollars as determined at 3:00 p.m. London time by the London Bullion Market Association (the “LBMA”) and published on Bloomberg page GLDL. The London Gold P.M. Fixing is determined by five market-making members of the LBMA. These members meet by telephone each London business day at 3:00 p.m. to determine the London Gold P.M. Fixing (afternoon fixing price). The five members are the Bank of Nova Scotia–ScotiaMocatta, Barclays Bank Plc, Deutsche Bank AG, HSBC Bank USA and Société Générale.

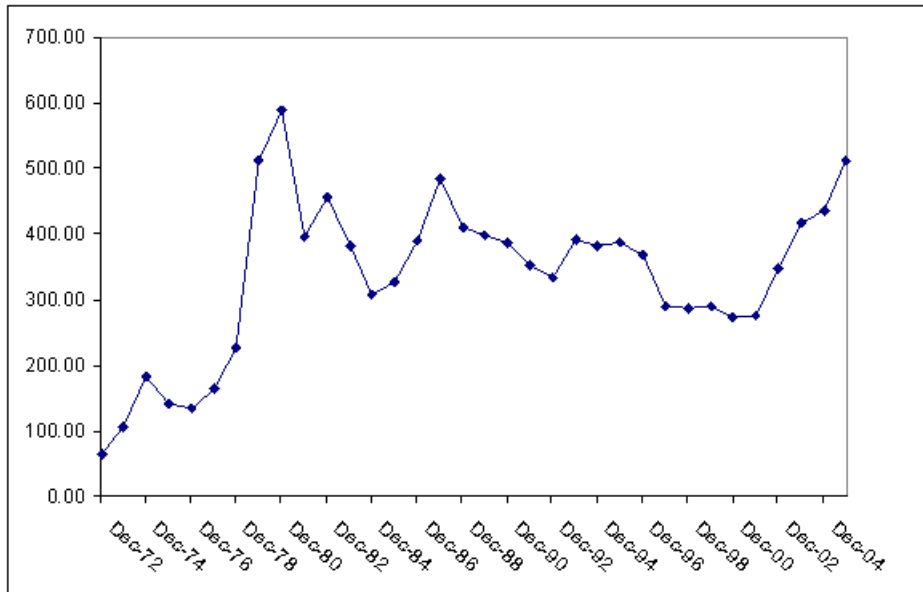
The London bullion market is an “over-the-counter” (OTC) market, as opposed to an exchange-traded environment. Members of the London bullion market typically trade with each other and with their clients on a principal-to-principal basis. All risks, including those of credit, are between the two parties to a transaction.

An investment in the Notes does not entitle you to any ownership interest, either directly or indirectly, in gold.

The Notes are not sponsored, endorsed, sold or promoted by the LBMA. The LBMA takes no responsibility for the accuracy and/or the completeness of information provided in this pricing supplement or the accompanying MTN prospectus supplement, general prospectus supplement or prospectus. In addition, the LBMA is not responsible for and has not participated in the determination of the timing of the sale of the Notes, prices at which the Notes are to initially be sold, or quantities of the Notes to be issued or in the determination or calculation of the equation by which the Notes are to be converted to cash. The LBMA has no obligation in connection with the administration, marketing or trading of the Notes.

Historical Gold Spot Prices

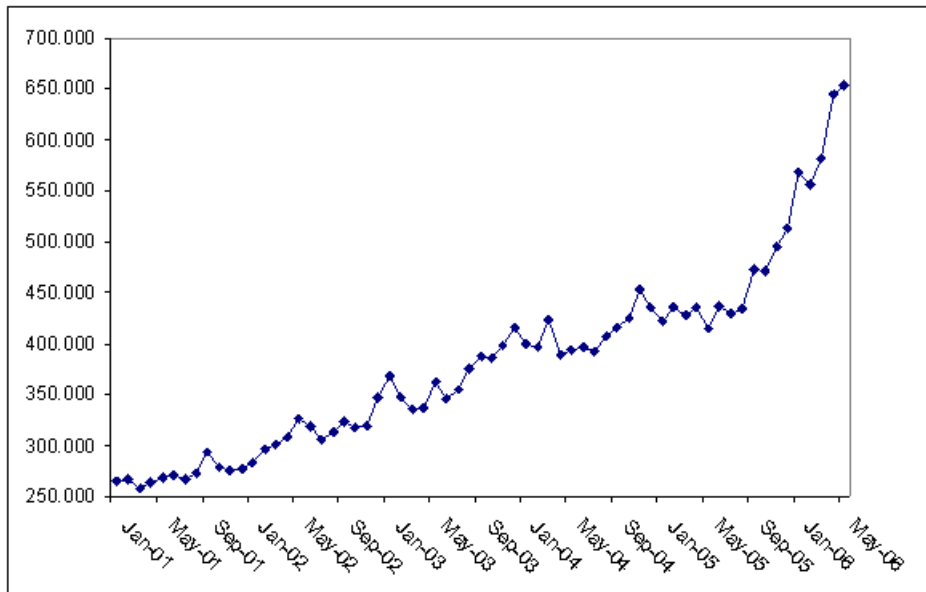
The following graph sets forth the London Gold P.M. Fixings on the last Business Day of each year from 1972 through 2005. The historical performance of the Gold Spot Price should not be taken as an indication of future performance, and no assurance can be given that the level of the Gold Spot Price will not decline and thereby reduce the Supplemental Redemption Amount which may be payable to you on the maturity date.



Set forth below are the London Gold P.M. Fixings on the last Business Day of each month from January 2001 to May 2006. This historical data is not necessarily indicative of the future performance of the Gold Spot Price or what the value of the Notes may be. Any upward or downward trend in the historical value of the Gold Spot Price during any period set forth below is not an indication that the Gold Spot Price is more or less likely to increase or decrease at any time over the term of the Notes.

	2001	2002	2003	2004	2005	2006
January	264.500	282.300	367.500	399.750	422.150	568.750
February	266.700	296.850	347.450	395.850	435.450	556.000
March	257.700	301.400	334.850	423.700	427.500	582.000
April	263.150	308.200	336.750	388.500	435.700	644.000
May	267.500	326.600	361.400	393.250	414.450	653.000
June	270.600	318.500	346.000	395.800	437.100	
July	265.900	304.650	354.750	391.400	429.000	
August	273.000	312.800	375.600	407.250	433.250	
September	293.100	323.700	388.000	415.650	473.250	
October	278.750	316.900	386.250	425.550	470.750	
November	275.500	319.050	398.350	453.400	495.650	
December	276.500	347.200	416.250	435.600	513.000	

The following graph sets forth the historical performance of the Gold Spot Price presented in the preceding table. This historical information is not necessarily indicative of the future performance of the Gold Spot Price.



UNITED STATES FEDERAL INCOME TAXATION

Set forth in full below is the opinion of Sidley Austin LLP, tax counsel to ML&Co., as to certain United States federal income tax consequences of the purchase, ownership and disposition of the Notes. This opinion is based upon laws, regulations, rulings and decisions now in effect, all of which are subject to change (including retroactive changes in effective dates) or possible differing interpretations. The discussion below deals only with Notes held as capital assets and does not purport to deal with persons in special tax situations, such as financial institutions, insurance companies, regulated investment companies, real estate investment trusts, dealers in securities or currencies, traders in securities that elect to mark to market, tax-exempt entities or persons holding Notes in a tax-deferred or tax-advantaged account (except to the extent specifically discussed below), persons whose functional currency is not the United States dollar, persons subject to the alternative minimum tax, or persons holding Notes as a hedge against currency risks, as a position in a "straddle" or as part of a "hedging", "conversion" or "integrated" transaction for tax purposes. It also does not deal with holders other than original purchasers. If a partnership holds the Notes, the tax treatment of a partner in the partnership will generally depend on the status of the partner and the activities of the partnership. Thus, persons who are partners in a partnership holding the Notes should consult their own tax advisors. Moreover, all persons considering the purchase of the Notes should consult their own tax advisors concerning the application of the United States federal income tax laws to their particular situations as well as any consequences of the purchase, ownership and disposition of the Notes arising under the laws of any other taxing jurisdiction.

As used in this pricing supplement, the term "U.S. Holder" means a beneficial owner of a Note that is for United States federal income tax purposes (a) a citizen or resident of the United States, (b) a corporation, partnership or other entity treated as a corporation or a partnership that is created or organized in or under the laws of the United States, any state thereof or the District of Columbia (other than a partnership that is not treated as a United States person under any applicable Treasury regulations), (c) an estate the income of which is subject to United States federal income taxation regardless of its source, (d) a trust if a court within the United States is able to exercise primary supervision over the administration of the trust and one or more United States persons have the authority to control all substantial decisions of the trust or (e) any other person whose income or gain in respect of a Note is effectively connected with the conduct of a United States trade or business. Notwithstanding clause (d) of the preceding sentence, to the extent provided in Treasury regulations, certain trusts in existence on August 20, 1996, and treated as United States persons prior to that date that elect to continue to be treated as United States persons also will be U.S. Holders. As used herein, the term "non-U.S. Holder" means a beneficial owner of a Note that is not a U.S. Holder.

General

There are no statutory provisions, regulations, published rulings or judicial decisions addressing or involving the characterization, for United States federal income tax purposes, of the Notes or securities with terms substantially the same as the Notes. However, although the matter is not free from doubt, under current law, each Note should be characterized and treated as a debt instrument of ML&Co. for United States federal income tax purposes. ML&Co. currently intends to characterize and treat each Note as a debt instrument of ML&Co. for United States federal income tax purposes and, where required, intends to file information returns with the Internal Revenue Service (the "IRS") in accordance with this characterization and tax treatment, in the absence of any change or clarification in the law, by regulation or otherwise, requiring a different characterization and tax treatment of the Notes. Prospective investors in the Notes should be aware, however, that the IRS is not bound by ML&Co.'s characterization and tax treatment of the Notes as indebtedness, and the IRS could possibly take a different position as to the proper characterization and treatment of the Notes for United States federal income tax purposes. The following discussion of the principal United States federal income tax consequences of the purchase, ownership and disposition of the Notes is based upon the assumption that each Note will be characterized and treated as a debt instrument of ML&Co. for United States federal income tax purposes. If the Notes are not in fact characterized and treated as debt instruments of ML&Co. for United States federal income tax purposes, then the United States federal income tax treatment of the purchase, ownership and disposition of the Notes could differ from the treatment discussed below with the result that the timing and character of income, gain or loss recognized in respect of a Note could differ from the timing and character of income, gain or loss recognized in respect of a Note had the Notes in fact been characterized and treated as debt instruments of ML&Co. for United States federal income tax purposes.

U.S. Holders

On June 11, 1996, the Treasury Department issued final regulations (the "CPDI Regulations") concerning the proper United States federal income tax treatment of contingent payment debt instruments such as the Notes, which apply to debt instruments issued on or after August 13, 1996 and, accordingly, will apply to the Notes. In general, the CPDI Regulations cause the timing and character of income, gain or loss reported on a contingent payment debt instrument to substantially differ from the timing and character of income, gain or loss reported on a conventional non-contingent payment

debt instrument. Specifically, the CPDI Regulations generally require a U.S. Holder of this kind of instrument to include future contingent and noncontingent interest payments in income as that interest accrues based upon a projected payment schedule. Moreover, in general, under the CPDI Regulations, any gain recognized by a U.S. Holder on the sale, exchange, or retirement of a contingent payment debt instrument is treated as ordinary income, and all or a portion of any loss realized could be treated as ordinary loss as opposed to capital loss (depending upon the circumstances). The CPDI Regulations provide no definitive guidance as to whether or not an instrument is properly characterized as a debt instrument for United States federal income tax purposes.

In particular, solely for purposes of applying the CPDI Regulations to the Notes, ML&Co. has determined that the projected payment schedule for the Notes will consist of payment on the maturity date of a projected amount (the "Projected Redemption Amount") equal to \$11.8428 per unit of the Notes. This represents an estimated yield on the Notes equal to 5.71% per annum, compounded semi-annually. Accordingly, during the term of the Notes, a U.S. Holder of a Note will be required to include in income as ordinary interest an amount equal to the sum of the daily portions of interest on the Note that are deemed to accrue at this estimated yield for each day during the taxable year (or portion of the taxable year) on which the U.S. Holder holds the Note. The amount of interest that will be deemed to accrue in any accrual period (i.e., generally each six-month period during which the Notes are outstanding) will equal the product of this estimated yield (properly adjusted for the length of the accrual period) and the Note's adjusted issue price (as defined below) at the beginning of the accrual period. The daily portions of interest will be determined by allocating to each day in the accrual period the ratable portion of the interest that is deemed to accrue during the accrual period. In general, for these purposes, a Note's adjusted issue price will equal the Note's issue price (i.e., \$10.00 per unit of the Notes), increased by the interest previously accrued on the Note. At maturity of a Note, in the event that the actual amount payable on the maturity date (the "Actual Redemption Amount") exceeds \$11.8428 per unit of the Notes (i.e., the Projected Redemption Amount), a U.S. Holder will be required to include the excess of the Actual Redemption Amount over \$11.8428 per unit of the Notes (i.e., the Projected Redemption Amount) in income as ordinary interest on the maturity date. Alternatively, in the event that the Actual Redemption Amount is less than \$11.8428 per unit of the Notes (i.e., the Projected Redemption Amount), the amount by which the Projected Redemption Amount (i.e., \$11.8428 per unit of the Notes) exceeds the Actual Redemption Amount will be treated (a) first as an offset to any interest otherwise includible in income by the U.S. Holder with respect to the Note for the taxable year in which the maturity date occurs to the extent of the amount of that includible interest and (b) then, to the extent of the amount of interest previously included in income by the U.S. Holder with respect to a Note, as an ordinary loss that is not subject to the limitations applicable to miscellaneous itemized deductions. Any remaining portion of the Projected Redemption Amount (i.e., \$11.8428 per unit of the Notes) in excess of the Actual Redemption Amount that is not treated as an interest offset or an ordinary loss pursuant to the foregoing rules will be treated as a capital loss (which will be long-term if the Note has been held for more than one year as of the maturity date). In addition, U.S. Holders purchasing a Note at a price that differs from the adjusted issue price of the Note as of the purchase date (e.g., subsequent purchases) will be subject to rules providing for certain adjustments to the foregoing rules and these U.S. Holders should consult their own tax advisors concerning these rules.

Upon the sale or exchange of a Note prior to the maturity date, a U.S. Holder will be required to recognize taxable gain or loss in an amount equal to the difference, if any, between the amount realized by the U.S. Holder upon that sale or exchange and the U.S. Holder's adjusted tax basis in the Note as of the date of disposition. A U.S. Holder's adjusted tax basis in a Note generally will equal the U.S. Holder's initial investment in the Note increased by any interest previously included in income with respect to the Note by the U.S. Holder. Any taxable gain will be treated as ordinary income. Any taxable loss will be treated as ordinary loss to the extent of the U.S. Holder's total interest inclusions on the Note. Any remaining loss generally will be treated as long-term or short-term capital loss (depending upon the U.S. Holder's holding period for the Note). All amounts includible in income by a U.S. Holder as ordinary interest pursuant to the CPDI Regulations will be treated as original issue discount.

The projected payment schedule (including both the Projected Redemption Amount and the estimated yield on the Notes) has been determined solely for United States federal income tax purposes (i.e., for purposes of applying the CPDI Regulations to the Notes), and is neither a prediction nor a guarantee of what the actual amount payable on the maturity date will be, or that the actual amount payable on the maturity date will even exceed \$9.00 per unit of the Notes.

All prospective investors in the Notes should consult their own tax advisors concerning the application of the CPDI Regulations to their investment in the Notes. Investors in the Notes may also obtain the projected payment schedule, as determined by ML&Co. for purposes of applying the CPDI Regulations to the Notes, by submitting a written request for that information to Merrill Lynch & Co., Inc., Corporate Secretary's Office, 222 Broadway, 17th Floor, New York, New York 10038, (212) 670-0432, corporatesecretary@exchange.ml.com.

The following table sets forth the amount of interest that will be deemed to accrue with respect to each \$10.00 principal amount per unit of the Notes during each accrual period over the term of the Notes based upon the projected payment schedule for the Notes (including both the Projected Redemption Amount and an estimated yield equal to 5.71% per annum (compounded semi-annually)) as determined by ML&Co. for purposes of applying the CPDI Regulations to the Notes.

Accrual Period	Interest deemed to accrue on Notes during accrual period (per unit)	Total interest deemed to have accrued on Notes as of end of accrual period (per unit)
July 6, 2006 through January 6, 2007	\$0.2879	\$0.2879
January 7, 2007 through July 6, 2007	\$0.2937	\$0.5816
July 7, 2007 through January 6, 2008	\$0.3021	\$0.8837
January 7, 2008 through July 6, 2008	\$0.3107	\$1.1944
July 7, 2008 through January 6, 2009	\$0.3196	\$1.5140
January 7, 2009 through July 6, 2009	\$0.3288	\$1.8428

Projected Redemption Amount = \$11.8428 per unit of the Notes.

Unrelated Business Taxable Income

Section 511 of the Internal Revenue Code of 1986, as amended (the “Code”), generally imposes a tax, at regular corporate or trust income tax rates, on the “unrelated business taxable income” of certain tax-exempt organizations, including qualified pension and profit sharing plan trusts and individual retirement accounts. In general, if the Notes are held for investment purposes, the amount of income or gain realized with respect to the Notes will not constitute unrelated business taxable income. However, if a Note constitutes debt-financed property (as defined in Section 514(b) of the Code) by reason of indebtedness incurred by a holder of a Note to purchase the Note, all or a portion of any income or gain realized with respect to such Note may be classified as unrelated business taxable income pursuant to Section 514 of the Code. Moreover, prospective investors in the Notes should be aware that whether or not any income or gain realized with respect to a Note which is owned by an organization that is generally exempt from U.S. federal income taxation pursuant to Section 501(a) of the Code constitutes unrelated business taxable income will depend upon the specific facts and circumstances applicable to such organization. Accordingly, any potential investors in the Notes that are generally exempt from U.S. federal income taxation pursuant to Section 501(a) of the Code are urged to consult with their own tax advisors concerning the U.S. federal income tax consequences to them of investing in the Notes.

Non-U.S. Holders

A non-U.S. Holder will not be subject to United States federal income taxes on payments of principal, premium (if any) or interest (including original issue discount) on a Note, unless the non-U.S. Holder is a direct or indirect 10% or greater shareholder of ML&Co., a controlled foreign corporation related to ML&Co. or a bank receiving interest described in Section 881(c)(3)(A) of the Code. However, income allocable to non-U.S. Holders will generally be subject to annual tax reporting on IRS Form 1042-S. For a non-U.S. Holder to qualify for the exemption from taxation, any person, U.S. or foreign, that has control, receipt or custody of an amount subject to withholding, or who can disburse or make payments of an amount subject to withholding (the “Withholding Agent”) must have received a statement that (a) is signed by the beneficial owner of the Note under penalties of perjury, (b) certifies that the owner is a non-U.S. Holder and (c) provides the name and address of the beneficial owner. The statement may generally be made on IRS Form W-8BEN (or other applicable form) or a substantially similar form, and the beneficial owner must inform the Withholding Agent of any change in the information on the statement within 30 days of that change by filing a new IRS Form W-8BEN (or other applicable form). Generally, an IRS Form W-8BEN provided without a U.S. taxpayer identification number will remain in effect for a period starting on the date the form is signed and ending on the last day of the third succeeding calendar year, unless a change in circumstances makes any information on the form incorrect. If a Note is held through a securities clearing organization or certain other financial institutions, the organization or institution may provide a signed statement to the Withholding Agent. Under certain circumstances, the signed statement must be accompanied by a copy of the applicable IRS Form W-8BEN (or other applicable form) or the substitute form provided by the beneficial owner to the organization or institution.

Under current law, a Note will not be includible in the estate of a non-U.S. Holder unless the individual is a direct or indirect 10% or greater shareholder of ML&Co. or, at the time of the individual's death, payments in respect of that Note would have been effectively connected with the conduct by the individual of a trade or business in the United States.

Backup Withholding

Backup withholding at the applicable statutory rate of United States federal income tax may apply to payments made in respect of the Notes to registered owners who are not "exempt recipients" and who fail to provide certain identifying information (such as the registered owner's taxpayer identification number) in the required manner. Generally, individuals are not exempt recipients, whereas corporations and certain other entities generally are exempt recipients. Payments made in respect of the Notes to a U.S. Holder must be reported to the IRS, unless the U.S. Holder is an exempt recipient or establishes an exemption. Compliance with the identification procedures described in the preceding section would establish an exemption from backup withholding for those non-U.S. Holders who are not exempt recipients.

In addition, upon the sale of a Note to (or through) a broker, the broker must withhold on the entire purchase price, unless either (a) the broker determines that the seller is a corporation or other exempt recipient or (b) the seller provides, in the required manner, certain identifying information (e.g., an IRS Form W-9) and, in the case of a non-U.S. Holder, certifies that the seller is a non-U.S. Holder (and certain other conditions are met).

This type of a sale must also be reported by the broker to the IRS, unless either (a) the broker determines that the seller is an exempt recipient or (b) the seller certifies its non-U.S. status (and certain other conditions are met). Certification of the registered owner's non-U.S. status would be made normally on an IRS Form W-8BEN (or other applicable form) under penalties of perjury, although in certain cases it may be possible to submit other documentary evidence.

Any amounts withheld under the backup withholding rules from a payment to a beneficial owner would be allowed as a refund or a credit against the beneficial owner's United States federal income tax provided the required information is furnished to the IRS.

ERISA CONSIDERATIONS

Each fiduciary of a pension, profit-sharing or other employee benefit plan (a “plan”) subject to the Employee Retirement Income Security Act of 1974, as amended (“ERISA”), should consider the fiduciary standards of ERISA in the context of the plan’s particular circumstances before authorizing an investment in the Notes. Accordingly, among other factors, the fiduciary should consider whether the investment would satisfy the prudence and diversification requirements of ERISA and would be consistent with the documents and instruments governing the plan, and whether the investment would involve a prohibited transaction under Section 406 of ERISA or Section 4975 of the Code.

Section 406 of ERISA and Section 4975 of the Code prohibit plans, as well as individual retirement accounts and Keogh plans subject to Section 4975 of the Code (also “plans”) from engaging in certain transactions involving “plan assets” with persons who are “parties in interest” under ERISA or “disqualified persons” under the Code (“parties in interest”) with respect to the plan or account. A violation of these prohibited transaction rules may result in civil penalties or other liabilities under ERISA and/or an excise tax under Section 4975 of the Code for those persons, unless exemptive relief is available under an applicable statutory, regulatory or administrative exemption. Certain employee benefit plans and arrangements including those that are governmental plans (as defined in section 3(32) of ERISA), certain church plans (as defined in Section 3(33) of ERISA) and foreign plans (as described in Section 4(b)(4) of ERISA) (“non-ERISA arrangements”) are not subject to the requirements of ERISA or Section 4975 of the Code but may be subject to similar provisions under applicable federal, state, local, foreign or other regulations, rules or laws (“similar laws”).

The acquisition of the Notes by a plan with respect to which we, MLPF&S or certain of our affiliates is or becomes a party in interest may constitute or result in a prohibited transaction under ERISA or Section 4975 of the Code, unless those Notes are acquired pursuant to and in accordance with an applicable exemption. The U.S. Department of Labor has issued five prohibited transaction class exemptions, or “PTCEs”, that may provide exemptive relief if required for direct or indirect prohibited transactions that may arise from the purchase or holding of the Notes. These exemptions are:

- (1) PTCE 84-14, an exemption for certain transactions determined or effected by independent qualified professional asset managers;
- (2) PTCE 90-1, an exemption for certain transactions involving insurance company pooled separate accounts;
- (3) PTCE 91-38, an exemption for certain transactions involving bank collective investment funds;
- (4) PTCE 95-60, an exemption for transactions involving certain insurance company general accounts; and
- (5) PTCE 96-23, an exemption for plan asset transactions managed by in-house asset managers.

The Notes may not be purchased or held by (1) any plan, (2) any entity whose underlying assets include “plan assets” by reason of any plan’s investment in the entity (a “plan asset entity”) or (3) any person investing “plan assets” of any plan, unless in each case the purchaser or holder is eligible for the exemptive relief available under one or more of the PTCEs listed above or another applicable similar exemption. Any purchaser or holder of the Notes or any interest in the Notes will be deemed to have represented by its purchase and holding of the Notes that it either (1) is not a plan or a plan asset entity and is not purchasing those Notes on behalf of or with “plan assets” of any plan or plan asset entity or (2) with respect to the purchase or holding, is eligible for the exemptive relief available under any of the PTCEs listed above or another applicable exemption. In addition, any purchaser or holder of the Notes or any interest in the Notes which is a non-ERISA arrangement will be deemed to have represented by its purchase and holding of the Notes that its purchase and holding will not violate the provisions of any similar law.

Due to the complexity of these rules and the penalties that may be imposed upon persons involved in non-exempt prohibited transactions, it is important that fiduciaries or other persons considering purchasing the Notes on behalf of or with “plan assets” of any plan, plan asset entity or non-ERISA arrangement consult with their counsel regarding the availability of exemptive relief under any of the PTCEs listed above or any other applicable exemption, or the potential consequences of any purchase or holding under similar laws, as applicable.

USE OF PROCEEDS AND HEDGING

The net proceeds from the sale of the Notes will be used as described under “Use of Proceeds” in the accompanying general prospectus supplement and to hedge market risks of ML&Co. associated with its obligation to pay the Minimum Redemption Amount and Supplemental Redemption Amount, if any.

SUPPLEMENTAL PLAN OF DISTRIBUTION

MLPF&S has advised ML&Co. that it proposes initially to offer all or part of the Notes directly to the public on a fixed price basis at the offering prices set forth on the cover of this pricing supplement. After the initial public offering, the public offering prices may be changed. The obligations of MLPF&S are subject to certain conditions and it is committed to take and pay for all of the Notes if any are taken.

EXPERTS

The consolidated financial statements, the related financial statement schedule, and management’s report on the effectiveness of internal control over financial reporting incorporated in this pricing supplement by reference from Merrill Lynch & Co., Inc.’s Annual Report on Form 10-K for the year ended December 30, 2005 have been audited by Deloitte & Touche LLP, an independent registered public accounting firm, as stated in their reports, which are incorporated herein by reference, and have been so incorporated in reliance upon the reports of such firm given upon their authority as experts in accounting and auditing.

With respect to the unaudited interim condensed consolidated financial information for the periods ended March 31, 2006 and April 1, 2005, which is incorporated herein by reference, Deloitte & Touche LLP, an independent registered public accounting firm, have applied limited procedures in accordance with the standards of the Public Company Accounting Oversight Board (United States) for a review of such information. However, as stated in their report dated May 5, 2006 included in Merrill Lynch & Co., Inc.’s Quarterly Report on Form 10-Q for the quarter ended March 31, 2006 and incorporated by reference herein, they did not audit and they do not express an opinion on that unaudited interim condensed consolidated financial information. Accordingly, the degree of reliance on their report on such information should be restricted in light of the limited nature of the review procedures applied. Deloitte & Touche LLP are not subject to the liability provisions of Section 11 of the Securities Act of 1933 for their report on the unaudited interim condensed consolidated financial information because that report is not a “report” or a “part” of the registration statement prepared or certified by an accountant within the meaning of Sections 7 and 11 of the Act.

INDEX OF CERTAIN DEFINED TERMS

	<u>Page</u>
Business Day	PS-11
Calculation Agent	PS-6
Calculation Day	PS-11
Calculation Period	PS-11
Ending Value	PS-4
London Gold P.M. Fixing	PS-4
Minimum Redemption Amount	PS-4
Notes	PS-1
Participation Rate	PS-4
Pricing Date	PS-4
Starting Value	PS-4
Supplemental Redemption Amount	PS-4



397,960 Units

Merrill Lynch & Co., Inc.

Medium-Term Notes, Series C

90% Protected Notes
Linked to the Gold Spot Price
due July 6, 2009
(the "Notes")
\$10 original public offering price per unit

PRICING SUPPLEMENT

Merrill Lynch & Co.

June 29, 2006
