



7,000,000 Units

Merrill Lynch & Co., Inc.

Market Recovery NotesSM Linked to the Dow Jones Industrial AverageSM

due January 31, 2005

(the "Notes")

\$10 original public offering price per unit

The Notes:

- No payments prior to maturity.
- We cannot redeem the Notes prior to maturity.
- Senior unsecured debt securities of Merrill Lynch & Co., Inc.
- Linked to the value of the Dow Jones Industrial AverageSM.
- The Notes have been approved for listing on the American Stock Exchange under the trading symbol "MRZ", subject to official notice of issuance.
- Expected settlement date: November 29, 2002.

Payment at maturity:

- The amount you receive at maturity will be based upon the percentage change in the value of the Dow Jones Industrial Average. If the value of the Dow Jones Industrial Average has increased over the term of the Notes, at maturity you will receive a payment per Note based upon triple the percentage increase of the Dow Jones Industrial Average, not to exceed a maximum payment of \$13.30 per Note, as described in this prospectus supplement. If the value of the Dow Jones Industrial Average has decreased over the term of the Notes, at maturity you will receive a payment per Note based on that percentage decrease. As a result, you may receive less, and possibly significantly less, than the original public offering price of \$10 per Note.

Investing in the Notes involves risks that are described in the "[Risk Factors](#)" section beginning on page S-7 of this prospectus supplement.

Neither the Securities and Exchange Commission nor any state securities commission has approved or disapproved of these securities or determined if this prospectus supplement or the accompanying prospectus is truthful or complete. Any representation to the contrary is a criminal offense.

	<u>Per Unit</u>	<u>Total</u>
Public offering price (1)	\$10.00	\$70,000,000
Underwriting discount	\$.20	\$ 1,400,000
Proceeds, before expenses, to Merrill Lynch & Co., Inc.	\$ 9.80	\$68,600,000

- (1) The public offering price and the underwriting discount for any single transaction to purchase between 100,000 units and 199,999 units will be \$9.90 per unit and \$.10 per unit, respectively, and 200,000 units or more will be \$9.85 per unit and \$.05 per unit, respectively.

Merrill Lynch & Co.

The date of this prospectus supplement is November 25, 2002.

"Dow Jones", "Dow Jones Industrial AverageSM" and "DJIA" are service marks of Dow Jones & Company, Inc. and have been licensed for use for certain purposes by Merrill Lynch, Pierce, Fenner & Smith.

"Market Recovery Notes" is a service mark of Merrill Lynch & Co., Inc.

TABLE OF CONTENTS
Prospectus Supplement

	<u>Page</u>
SUMMARY INFORMATION—Q&A	S-4
What are the Notes?	S-4
What will I receive upon maturity of the Notes?	S-4
Who publishes the Index and what does the Index measure?	S-5
How has the Index performed historically?	S-6
What about taxes?	S-6
Will I receive interest payments on the Notes?	S-6
Will the Notes be listed on a stock exchange?	S-6
What is the role of MLPF&S?	S-6
What is ML&Co.?	S-6
Are there any risks associated with my investment?	S-6
RISK FACTORS	S-7
Your investment may result in a loss	S-7
Your yield may be lower than the yield on a standard debt security of comparable maturity	S-7
Your return is limited and will not reflect the return of owning the stocks included in the Index	S-7
There may be an uncertain trading market for the Notes	S-7
Many factors affect the trading value of the Notes; these factors interrelate in complex ways and the effect of any one factor may offset or magnify the effect of another factor	S-7
Amounts payable on the Notes may be limited by state law	S-8
Purchases and sales by us and our affiliates may affect your return	S-9
Potential conflicts	S-9
Uncertain tax consequences	S-9
DESCRIPTION OF THE NOTES	S-10
Payment at maturity	S-10
Hypothetical returns	S-11
Adjustments to the Index; Market Disruption Events	S-12
Discontinuance of the Index	S-13
Events of Default and Acceleration	S-13
Depository	S-14
Same-Day Settlement and Payment	S-16
THE INDEX	S-17
License Agreement	S-18
Historical Data on the Index	S-19
UNITED STATES FEDERAL INCOME TAXATION	S-21
General	S-21
Tax Treatment of the Notes	S-22
Possible Alternative Tax Treatments of an Investment in the Notes	S-22
Non-U.S. Holders	S-22
Backup Withholding and Information Reporting	S-23
ERISA CONSIDERATIONS	S-23
USE OF PROCEEDS AND HEDGING	S-24
WHERE YOU CAN FIND MORE INFORMATION	S-24
UNDERWRITING	S-26
VALIDITY OF THE NOTES	S-26
EXPERTS	S-27
INDEX OF DEFINED TERMS	S-28

Prospectus

	<u>Page</u>
MERRILL LYNCH & CO., INC	2
USE OF PROCEEDS	2
RATIO OF EARNINGS TO FIXED CHARGES AND RATIO OF EARNINGS TO COMBINED FIXED CHARGES AND PREFERRED STOCK DIVIDENDS	3
THE SECURITIES	3
DESCRIPTION OF DEBT SECURITIES	4
DESCRIPTION OF DEBT WARRANTS	10
DESCRIPTION OF CURRENCY WARRANTS	12
DESCRIPTION OF INDEX WARRANTS	14
DESCRIPTION OF PREFERRED STOCK	19
DESCRIPTION OF DEPOSITARY SHARES	24
DESCRIPTION OF PREFERRED STOCK WARRANTS	28
DESCRIPTION OF COMMON STOCK	30
DESCRIPTION OF COMMON STOCK WARRANTS	34
PLAN OF DISTRIBUTION	36
WHERE YOU CAN FIND MORE INFORMATION	37
INCORPORATION OF INFORMATION WE FILE WITH THE SEC	37
EXPERTS	38

SUMMARY INFORMATION—Q&A

This summary includes questions and answers that highlight selected information from this prospectus supplement and the accompanying prospectus to help you understand the Market Recovery NotesSM Linked to the Dow Jones Industrial AverageSM due January 31, 2005 (the “Notes”). You should carefully read this prospectus supplement and the accompanying prospectus to fully understand the terms of the Notes, the Dow Jones Industrial Average (the “Index”) and the tax and other considerations that are important to you in making a decision about whether to invest in the Notes. You should carefully review the “Risk Factors” section, which highlights certain risks associated with an investment in the Notes, to determine whether an investment in the Notes is appropriate for you.

References in this prospectus supplement to “ML&Co.,” “we,” “us” and “our” are to Merrill Lynch & Co., Inc. and references to “MLPF&S” are to Merrill Lynch, Pierce, Fenner & Smith Incorporated.

What are the Notes?

The Notes will be a series of senior debt securities issued by ML&Co. and will not be secured by collateral. The Notes will rank equally with all of our other unsecured and unsubordinated debt. The Notes will mature on January 31, 2005.

Each unit will represent a single Note with an original public offering price of \$10.00. You may transfer the Notes only in whole units. You will not have the right to receive physical certificates evidencing your ownership except under limited circumstances. Instead, we will issue the Notes in the form of a global certificate, which will be held by The Depository Trust Company, also known as DTC, or its nominee. Direct and indirect participants in DTC will record your ownership of the Notes. You should refer to the section entitled “Description of the Notes—Depository” in this prospectus supplement.

What will I receive upon maturity of the Notes?

At maturity, for each unit of Notes you own, you will receive a payment equal to the “Redemption Amount”. The Redemption Amount to which you will be entitled depends entirely on the relation of the Ending Value to the Starting Value:

(i) If the Ending Value is greater than the Starting Value, the Redemption Amount per unit will equal:

$$\$10 + \left(\$30 \times \left(\frac{\text{Ending Value} - \text{Starting Value}}{\text{Starting Value}} \right) \right)$$

provided, however, the Redemption Amount cannot exceed \$13.30 per unit (the “Capped Value”).

(ii) If the Ending Value is equal to or less than the Starting Value, the Redemption Amount per unit will equal:

$$\$10 \times \left(\frac{\text{Ending Value}}{\text{Starting Value}} \right)$$

The “Starting Value” equals 8,849.40, the closing value of the Index on November 25, 2002, the date the Notes were priced for initial sale to the public.

The “Ending Value” means the average of the values of the Index at the close of the market on five business days shortly before the maturity of the Notes. We may calculate the Ending Value by reference to fewer than five or even by reference to a single day’s closing value if, during the period shortly before the maturity of the Notes, there is a disruption in the trading of the component stocks included in the Index or certain futures or options contracts relating to the Index.

You should understand that the opportunity to participate in the possible increases in the value of the Index through an investment in the Notes is limited because the amount that you receive at maturity will never exceed the Capped Value, which represents an appreciation of 33% over the original public offering price of the Notes. However, in the event that the value of the Index declines over the term of the Notes, the amount you receive at maturity will be proportionately less than the original public

Table of Contents

offering price and you may therefore lose a part or all of your initial investment in the Notes.

For more specific information about the Redemption Amount, please see the section entitled “Description of the Notes” in this prospectus supplement.

Examples

Set forth below are three examples of Redemption Amount calculations:

Example 1—The hypothetical Ending Value is equal to 50% of the Starting Value:

Starting Value: 8,849.40

Hypothetical Ending Value: 4,424.70

$$\text{Redemption Amount (per Unit)} = \$10 \times \left(\frac{4,424.70}{8,849.40} \right) = \$5.00$$

Example 2—The hypothetical Ending Value is equal to 105% of the Starting Value:

Starting Value: 8,849.40

Hypothetical Ending Value: 9,291.87

$$\text{Redemption Amount (per Unit)} = \$10 + \left(\$30 \times \left(\frac{9,291.87 - 8,849.40}{8,849.40} \right) \right) = \$11.50$$

Example 3—The hypothetical Ending Value is equal to 150% of the Starting Value:

Starting Value: 8,849.40

Hypothetical Ending Value: 13,274.10

$$\text{Redemption Amount (per Unit)} = \$10 + \left(\$30 \times \left(\frac{13,274.10 - 8,849.40}{8,849.40} \right) \right) = \$13.30$$

(Redemption Amount cannot be greater than the Capped Value)

Who publishes the Index and what does the Index measure?

The Dow Jones Industrial AverageSM is a price-weighted index published by Dow Jones & Company, Inc. (“Dow Jones”) which means a component stock’s weight in the Index is based on its price per share rather than the total market capitalization of the issuer of that component stock. The Index is designed to provide an indication of the composite price performance of 30 common stocks of corporations representing a broad cross-section of U.S. industry. The component stocks of the Index are selected by the editors of *The Wall Street Journal* (the “WSJ”). The corporations represented in the Index tend to be market leaders in their respective industries and their stocks are typically widely held by individuals and institutional investors. The corporations currently represented in the Index are incorporated in the U.S. and its territories and their stocks are traded on the New York Stock Exchange and the Nasdaq National Market. As of November 25, 2002, the market capitalization of the stocks in the Index ranged from approximately \$10.7 billion to \$311.2 billion, with the average market capitalization being \$93.2 billion.

The value of the Index is the sum of the primary exchange prices of each of the 30 common stocks included in the Index, divided by a divisor that is designed to provide a meaningful continuity in the value of the Index. Because the Index is price-weighted, stock splits or changes in the component stocks could result in distortions in the Index value. In order to prevent these distortions related to extrinsic factors, the divisor may be changed in accordance with a mathematical formula that reflects adjusted proportions within the Index. The current divisor of the Index is published daily in the WSJ and other publications. In addition, other statistics based on the Index may be found in a variety of publicly available sources.

Table of Contents

Please note that an investment in the Notes does not entitle you to any ownership interest in the stocks of the companies included in the Index.

How has the Index performed historically?

We have provided a table and a graph showing the closing values of the Index on the last business day of each month from January 1997 through October 2002 and a graph showing the closing values on the last business day of each year from 1946 to 2001 as published by Dow Jones. You can find this information in the section entitled “The Index—Historical data on the Index” in this prospectus supplement. We have provided this historical information to help you evaluate the behavior of the Index in various economic environments; however, past performance of the Index is not necessarily indicative of how the Index will perform in the future.

What about taxes?

The U.S. federal income tax consequences of an investment in the Notes are complex and uncertain. By purchasing a Note, you and ML&Co. hereby agree, in the absence of an administrative or judicial ruling to the contrary, to characterize a Note for all tax purposes as a pre-paid cash-settled forward contract linked to the value of the Index. Under this characterization of the Notes, you should be required to recognize gain or loss to the extent that you receive cash on the maturity date or upon a sale or exchange of a Note prior to the maturity date. You should review the discussion under the section entitled “United States Federal Income Taxation” in this prospectus supplement.

Will I receive interest payments on the Notes?

You will not receive any interest payments on the Notes, but will instead receive the Redemption Amount at maturity. We have designed the Notes for investors who are willing to forego market interest payments on the Notes, such as floating interest rates paid on standard senior non-callable debt securities, in exchange for the ability to participate in changes in the value of the Index over the term of the Notes.

Will the Notes be listed on a stock exchange?

The Notes have been approved for listing on the AMEX under the trading symbol “MRZ”, subject to official notice of issuance. You should be aware that the listing of the Notes on the AMEX will not necessarily ensure that a liquid trading market will be available for the Notes. You should review the section entitled “Risk Factors—There may be an uncertain trading market for the Notes” in this prospectus supplement.

What is the role of MLPF&S?

Our subsidiary MLPF&S is the underwriter for the offering and sale of the Notes. After the initial offering, MLPF&S intends to buy and sell Notes to create a secondary market for holders of the Notes, and may stabilize or maintain the market price of the Notes during the initial distribution of the Notes. However, MLPF&S will not be obligated to engage in any of these market activities or continue them once it has started.

MLPF&S will also be our agent for purposes of calculating, among other things, the Ending Value and the Redemption Amount. Under certain circumstances, these duties could result in a conflict of interest between MLPF&S’ status as our subsidiary and its responsibilities as calculation agent.

What is ML&Co.?

Merrill Lynch & Co., Inc. is a holding company with various subsidiary and affiliated companies that provide investment, financing, insurance and related services on a global basis.

For information about ML&Co., see the section entitled “Merrill Lynch & Co., Inc.” in the accompanying prospectus. You should also read other documents ML&Co. has filed with the SEC, which you can find by referring to the section entitled “Where You Can Find More Information” in this prospectus supplement.

Are there any risks associated with my investment?

Yes, an investment in the Notes is subject to risk, including the risk of loss of principal. Please refer to the section entitled “Risk Factors” in this prospectus supplement.

RISK FACTORS

Your investment in the Notes will involve risks. You should carefully consider the following discussion of risks before deciding whether an investment in the Notes is suitable for you.

Your investment may result in a loss

We will not repay you a fixed amount of principal on the Notes at maturity. The payment at maturity on the Notes will depend on the change in the value of Index. Because the value of the Index is subject to market fluctuations, the amount of cash you receive at maturity may be more or less than the original public offering price of the Notes. If the Ending Value is less than the Starting Value, the Redemption Amount will be less than the original public offering price of each Note, in which case your investment in the Notes will result in a loss to you. Additionally, although any positive return on the Notes is based on triple the amount of the percentage increase in the Index, in no event will the amount you receive at maturity be greater than the Capped Value.

Your yield may be lower than the yield on a standard debt security of comparable maturity

The amount we pay you at maturity may be less than the return you could earn on other investments. Your yield may be less than the yield you would earn if you bought a standard senior non-callable debt security of ML&Co. with the same maturity date. Your investment may not reflect the full opportunity cost to you when you take into account factors that affect the time value of money.

Your return is limited and will not reflect the return of owning the stocks included in the Index

You should understand that the opportunity to participate in the possible increases in the value of the Index through an investment in the Notes is limited because the amount that you receive on the maturity date will never exceed the Capped Value, which represents an appreciation of 33% over the original public offering price of the Notes. However, in the event that the value of the Index declines over the term of the Notes, you will realize the entire decline and will lose a part or all of your initial investment.

In addition, your return will not reflect the return you would realize if you actually owned the stocks underlying the Index and received the dividends paid on those stocks because the value of the Index is calculated by reference to the prices of the common stocks included in the Index without taking into consideration the value of dividends paid on those stocks.

There may be an uncertain trading market for the Notes

The Notes have been approved for listing on the AMEX under the trading symbol "MRZ", subject to official notice of issuance. Listing the Notes on the AMEX does not necessarily ensure that a trading market will develop for the Notes. If a trading market does develop, there can be no assurance that there will be liquidity in the trading market. The development of a trading market for the Notes will depend on our financial performance and other factors such as the increase, if any, in the value of the Index.

If the trading market for the Notes is limited, there may be a limited number of buyers for your Notes if you do not wish to hold your investment until maturity. This may affect the price you receive.

Many factors affect the trading value of the Notes; these factors interrelate in complex ways and the effect of any one factor may offset or magnify the effect of another factor

The trading value of the Notes will be affected by factors that interrelate in complex ways. It is important for you to understand that the effect of one factor may offset the increase in the trading value of the Notes caused by another factor and that the effect of one factor may exacerbate the decrease in the trading value

Table of Contents

of the Notes caused by another factor. For example, a change in the volatility of the Index may offset some or all of any increase in the trading value of the Notes attributable to another factor, such as an increase in the value of the Index. The following paragraphs describe the expected impact on the market value of the Notes given a change in a specific factor, assuming all other conditions remain constant.

The value of the Index is expected to affect the trading value of the Notes. We expect that the market value of the Notes will depend substantially on the amount, if any, by which the value of the Index exceeds or does not exceed the Starting Value. If you choose to sell your Notes when the value of the Index exceeds the Starting Value, you may receive substantially less than the amount that would be payable at maturity based on this value because of the expectation that the Index will continue to fluctuate until the Ending Value is determined. In addition, the payment at maturity on the Notes will not exceed the Capped Value, therefore we do not expect the Notes will trade in the secondary market above the Capped Value.

Changes in the volatility of the Index are expected to affect the trading value of the Notes. Volatility is the term used to describe the size and frequency of price and/or market fluctuations. If the volatility of the Index increases or decreases the trading value of the Notes may be adversely affected.

Changes in the levels of interest rates are expected to affect the trading value of the Notes. We expect that changes in interest rates will affect the trading value of the Notes. In general, if U.S. interest rates increase, we expect that the trading value of the Notes will decrease and, conversely, if U.S. interest rates decrease, we expect that the trading value of the Notes will increase.

Changes in dividend yields of the stocks included in the Index are expected to affect the trading value of the Notes. In general, if dividend yields on the stocks included in the Index increase, we expect that the value of the Notes will decrease and, conversely, if dividend yields on these stocks decrease, we expect that the value of the Notes will increase.

Changes in our credit ratings may affect the trading value of the Notes. Our credit ratings are an assessment of our ability to pay our obligations. Consequently, real or anticipated changes in our credit ratings may affect the trading value of the Notes. However, because the return on your Notes is dependent upon factors in addition to our ability to pay our obligations under the Notes, such as the percentage increase in the value of the Index at maturity, an improvement in our credit ratings will not reduce the other investment risks related to the Notes.

In general, assuming all relevant factors are held constant, we expect that the effect on the trading value of the Notes of a given change in some of the factors listed above will be less if it occurs later in the term of the Notes than if it occurs earlier in the term of the Notes.

Amounts payable on the Notes may be limited by state law

New York State law governs the 1983 Indenture under which the Notes will be issued. New York has usury laws that limit the amount of interest that can be charged and paid on loans, which includes debt securities like the Notes. Under present New York law, the maximum rate of interest is 25% per annum on a simple interest basis. This limit may not apply to debt securities in which \$2,500,000 or more has been invested.

While we believe that New York law would be given effect by a state or Federal court sitting outside of New York, many other states also have laws that regulate the amount of interest that may be charged to and paid by a borrower. We will promise, for the benefit of the Noteholders, to the extent permitted by law, not to voluntarily claim the benefits of any laws concerning usurious rates of interest.

[Table of Contents](#)

Purchases and sales by us and our affiliates may affect your return

We and our affiliates may from time to time buy or sell the stocks underlying the Index or futures or options contracts on the Index for our own accounts for business reasons and expect to enter into these transactions in connection with hedging our obligations under the Notes. These transactions could affect the price of these stocks and, in turn, the value of the Index in a manner that could be adverse to your investment in the Notes.

Potential conflicts

Our subsidiary MLPF&S is our agent for the purposes of calculating the Ending Value and the Redemption Amount. Under certain circumstances, MLPF&S' role as our subsidiary and its responsibilities as calculation agent for the Notes could give rise to conflicts of interest. These conflicts could occur, for instance, in connection with its determination as to whether the value of the Index can be calculated on a particular trading day, or in connection with judgments that it would be required to make in the event of a discontinuance of the Index. See the sections entitled "Description of the Notes—Adjustments to the Index; Market Disruption Events" and "—Discontinuance of the Index" in this prospectus supplement. MLPF&S is required to carry out its duties as calculation agent in good faith and using its reasonable judgment. However, you should be aware that because we control MLPF&S, potential conflicts of interest could arise.

We have entered into an arrangement with one of our subsidiaries to hedge the market risks associated with our obligation to pay amounts due at maturity on the Notes. This subsidiary expects to make a profit in connection with this arrangement. We did not seek competitive bids for this arrangement from unaffiliated parties.

ML&Co. or its affiliates may presently or from time to time engage in business with one or more of the companies included in the Index including extending loans to, or making equity investments in, the companies included in the Index or providing advisory services to the companies included in the Index, including merger and acquisition advisory services. In the course of business, ML&Co. or its affiliates may acquire non-public information relating to the companies included in the Index and, in addition, one or more affiliates of ML&Co. may publish research reports about the companies included in the Index. ML&Co. does not make any representation to any purchasers of the Notes regarding any matters whatsoever relating to the companies included in the Index. Any prospective purchaser of the Notes should undertake an independent investigation of the companies included in the Index as in its judgment is appropriate to make an informed decision regarding an investment in the Notes. The composition of the companies included in the Index does not reflect any investment or sell recommendations of ML&Co. or its affiliates.

Uncertain tax consequences

You should consider the tax consequences of investing in the Notes, aspects of which are uncertain. See the section entitled "United States Federal Income Taxation" in this prospectus supplement.

DESCRIPTION OF THE NOTES

ML&Co. will issue the Notes as a series of senior debt securities under the 1983 Indenture, which is more fully described in the accompanying prospectus. The Notes will mature on January 31, 2005.

While at maturity a beneficial owner of a Note will receive an amount equal to the Redemption Amount, there will be no other payment of interest, periodic or otherwise. See the section entitled “—Payment at maturity”.

The Notes will not be subject to redemption by ML&Co. or at the option of any beneficial owner before maturity. If an Event of Default occurs with respect to the Notes, registered holders of the Notes may accelerate the maturity of the Notes, as described under “—Events of Default and Acceleration” in this prospectus supplement and “Description of Debt Securities—Events of Default” in the accompanying prospectus.

ML&Co. will issue the Notes in denominations of whole units each with an original public offering price of \$10.00 per Note.

The Notes will not have the benefit of any sinking fund.

Payment at maturity

At maturity, a beneficial owner of a Note will be entitled to receive the Redemption Amount of that Note, as provided below.

Determination of the Redemption Amount

The “**Redemption Amount**” for a Note will be determined by the calculation agent as described below.

(i) If the Ending Value is greater than the Starting Value, the Redemption Amount per unit will equal:

$$\$10 + \left(\$30 \times \left(\frac{\text{Ending Value} - \text{Starting Value}}{\text{Starting Value}} \right) \right)$$

provided, however, the Redemption Amount cannot exceed \$13.30 per unit (the “Capped Value”).

(ii) If the Ending Value is equal to or less than the Starting Value, the Redemption Amount per unit will equal:

$$\$10 \times \left(\frac{\text{Ending Value}}{\text{Starting Value}} \right)$$

The “**Starting Value**” equals 8,849.40, the closing value of the Index on the Pricing Date.

The “**Ending Value**” will be determined by the calculation agent and will equal the average, arithmetic mean, of the closing values of the Index determined on each of the first five Calculation Days during the Calculation Period. If there are fewer than five Calculation Days, then the Ending Value will equal the average, arithmetic mean, of the closing values of the Index on those Calculation Days. If there is only one Calculation Day, then the Ending Value will equal the closing value of the Index on that Calculation Day. If no Calculation Days occur during the Calculation Period, then the Ending Value will equal the closing value of the Index determined on the last scheduled Index Business Day in the Calculation Period, regardless of the occurrence of a Market Disruption Event on that day.

[Table of Contents](#)

The “**Calculation Period**” means the period from and including the seventh scheduled Index Business Day prior to the maturity date to and including the second scheduled Index Business Day prior to the maturity date.

A “**Calculation Day**” means any Index Business Day during the Calculation Period on which a Market Disruption Event has not occurred.

An “**Index Business Day**” means a day on which The Nasdaq Stock Market, the New York Stock Exchange and the AMEX are open for trading and the Index or any successor index is calculated and published.

All determinations made by the calculation agent shall be at the sole discretion of the calculation agent and, absent a determination by the calculation agent of a manifest error, shall be conclusive for all purposes and binding on ML&Co. and the holders and beneficial owners of the Notes.

Hypothetical returns

The following table illustrates, for the Starting Value and range of hypothetical Ending Values of the Index:

- the percentage change from the Starting Value to the hypothetical Ending Value,
- the total amount payable at maturity for each Note,
- the total rate of return to beneficial owners of the Notes,
- the pretax annualized rate of return to beneficial owners of the Notes, and
- the pretax annualized rate of return of an investment in the stocks included in the Index, which includes an assumed aggregate dividend yield of 2.19% per annum, as more fully described below.

Hypothetical Ending Value	Percentage change from Starting Value to the hypothetical Ending Value	Total amount payable at maturity per Note	Total rate of return on the Notes	Pretax annualized rate of return on the Notes(1)	Pretax annualized rate of return of stocks included in the Index(1)(2)
4,424.70	-50%	\$ 5.00	-50.00%	-29.46%	-26.56%
5,309.64	-40%	\$ 6.00	-40.00%	-22.16%	-19.49%
6,194.58	-30%	\$ 7.00	-30.00%	-15.74%	-13.24%
7,079.52	-20%	\$ 8.00	-20.00%	-10.00%	-7.63%
7,964.46	-10%	\$ 9.00	-10.00%	-4.79%	-2.51%
8,849.40(3)	0%	\$10.00	0.00%	0.00%	2.20%
9,291.87	5%	\$11.50	15.00%	6.53%	4.42%
9,734.34	10%	\$13.00	30.00%	12.43%	6.56%
10,176.81	15%	\$13.30	33.00%	13.55%	8.63%
10,619.28	20%	\$13.30	33.00%	13.55%	10.64%
11,504.22	30%	\$13.30	33.00%	13.55%	14.47%
12,389.16	40%	\$13.30	33.00%	13.55%	18.08%
13,274.10	50%	\$13.30	33.00%	13.55%	21.50%
14,159.04	60%	\$13.30	33.00%	13.55%	24.76%
15,043.98	70%	\$13.30	33.00%	13.55%	27.86%

(1) The annualized rates of return specified in the preceding table are calculated on a semiannual bond equivalent basis.

Table of Contents

- (2) This rate of return assumes:
- (a) a percentage change in the aggregate price of the underlying stocks that equals the percentage change in the Index from the Starting Value to the relevant hypothetical Ending Value;
 - (b) a constant dividend yield of 2.19% per annum, paid quarterly from the date of initial delivery of the Notes, applied to the value of the Index at the beginning of each quarter and reinvested into the stocks included in the Index at the end of each quarter, assuming the Index value increases or decreases linearly from the Starting Value to the applicable hypothetical Ending Value;
 - (c) no transaction fees or expenses; and
 - (d) an investment term from November 29, 2002 to January 31, 2005.
- (3) This is the Starting Value.

The above figures are for purposes of illustration only. The actual Redemption Amount received by investors and the resulting total and pretax annualized rates of return will depend on the actual Ending Value as determined as described in this prospectus supplement.

Adjustments to the Index; Market Disruption Events

If at any time Dow Jones changes its method of calculating the Index, or the value of the Index changes, in any material respect, or if the Index is in any other way modified so that the Index does not, in the opinion of the calculation agent, fairly represent the value of the Index had those changes or modifications not been made, then, from and after that time, the calculation agent shall, at the close of business in New York, New York, on each date that the closing value of the Index is to be calculated, make any adjustments as, in the good faith judgment of the calculation agent, may be necessary in order to arrive at a calculation of a value of a stock index comparable to the Index as if those changes or modifications had not been made, and calculate the closing value with reference to the Index, as so adjusted. Accordingly, if the method of calculating the Index is modified so that the value of the Index is a fraction or a multiple of what it would have been if it had not been modified, e.g., due to a split, then the calculation agent shall adjust the Index in order to arrive at a value of the Index as if it had not been modified, e.g., as if a split had not occurred.

“**Market Disruption Event**” means either of the following events, as determined by the calculation agent:

- (a) the suspension of or material limitation on trading for more than two hours of trading, or during the one-half hour period preceding the close of trading on the applicable exchange in 20% or more of the stocks which then comprise the Index (without taking into account any extended or after-hours trading session); or
- (b) the suspension of or material limitation on trading, in each case, for more than two hours of trading, or during the one-half hour period preceding the close of trading, on the applicable exchange, whether by reason of movements in price otherwise exceeding levels permitted by the relevant exchange or otherwise, in option contracts or futures contracts related to the Index, or any successor index, which are traded on any major U.S. exchange.

For the purpose of the above definition:

- (1) a limitation on the hours in a trading day and/or number of days of trading will not constitute a Market Disruption Event if it results from an announced change in the regular business hours of the relevant exchange, and
- (2) for the purpose of clause (a) above, any limitations on trading during significant market fluctuations under NYSE Rule 80A, or any applicable rule or regulation enacted or promulgated by the NYSE or any other self regulatory organization or the SEC of similar scope as determined by the calculation agent, will be considered “material”.

Table of Contents

As a result of the terrorist attacks, the financial markets were closed from September 11, 2001 through September 14, 2001, and values of the Index are not available for those dates. These market closures would have constituted Market Disruption Events.

Discontinuance of the Index

If Dow Jones discontinues publication of the Index and Dow Jones or another entity publishes a successor or substitute index that the calculation agent determines, in its sole discretion, to be comparable to the Index (a “successor index”), then, upon the calculation agent’s notification of any determination to the trustee and ML&Co., the calculation agent will substitute the successor index as calculated by Dow Jones or any other entity for the Index and calculate the closing value as described above under “— Payment at maturity”. Upon any selection by the calculation agent of a successor index, ML&Co. shall cause notice to be given to holders of the Notes.

In the event that Dow Jones discontinues publication of the Index and:

- the calculation agent does not select a successor index, or
- the successor index is no longer published on any of the Calculation Days,

the calculation agent will compute a substitute value for the Index in accordance with the procedures last used to calculate the Index before any discontinuance. If a successor index is selected or the calculation agent calculates a value as a substitute for the Index as described below, the successor index or value will be used as a substitute for the Index for all purposes, including for purposes of determining whether a Market Disruption Event exists.

If Dow Jones discontinues publication of the Index before the period during which the Redemption Amount is to be determined and the calculation agent determines that no successor index is available at that time, then on each Business Day until the earlier to occur of:

- the determination of the Ending Value, or
- a determination by the calculation agent that a successor index is available,

the calculation agent will determine the value that would be used in computing the Redemption Amount as described in the preceding paragraph as if that day were a Calculation Day. The calculation agent will cause notice of each value to be published not less often than once each month in the WSJ or another newspaper of general circulation, and arrange for information with respect to these values to be made available by telephone.

A “**Business Day**” is any day on which the NYSE, The Nasdaq Stock Market and the AMEX are open for trading.

Notwithstanding these alternative arrangements, discontinuance of the publication of the Index may adversely affect trading in the Notes.

Events of Default and Acceleration

In case an Event of Default with respect to any Notes has occurred and is continuing, the amount payable to a beneficial owner of a Note upon any acceleration permitted by the Notes, with respect to each \$10 original public offering price of each unit, will be equal to the Redemption Amount, calculated as though the date of early repayment were the stated maturity date of the Notes. If a bankruptcy proceeding is commenced in respect of ML&Co., the claim of the beneficial owner of a Note may be limited, under Section 502(b)(2) of Title

Table of Contents

11 of the United States Code, to the original public offering price of the Note plus an additional amount of contingent interest calculated as though the date of the commencement of the proceeding were the maturity date of the Notes.

In case of default in payment of the Notes, whether at their maturity or upon acceleration, from and after that date the Notes will bear interest, payable upon demand of their beneficial owners, at the rate of 1.73% per annum to the extent that payment of any interest is legally enforceable on the unpaid amount due and payable on that date in accordance with the terms of the Notes to the date payment of that amount has been made or duly provided for.

Depository

Description of the Global Securities

Upon issuance, all Notes will be represented by one or more fully registered global securities. Each global security will be deposited with, or on behalf of, DTC, together with any successor, being a “depository”), as depository, registered in the name of Cede & Co., DTC’s partnership nominee. Unless and until it is exchanged in whole or in part for Notes in definitive form, no global security may be transferred except as a whole by the depository to a nominee of the depository or by a nominee of the depository to the depository or another nominee of the depository or by the depository or any nominee to a successor of the depository or a nominee of that successor.

So long as DTC, or its nominee, is a registered owner of a global security, DTC or its nominee, as the case may be, will be considered the sole owner or holder of the Notes represented by the global security for all purposes under the 1983 Indenture. Except as provided below, the beneficial owners of the Notes will not be entitled to have the Notes represented by a global security registered in their names, will not receive or be entitled to receive physical delivery of the Notes in definitive form and will not be considered the owners or holders of the Notes including for purposes of receiving any reports delivered by ML&Co. or the trustee under the 1983 Indenture. Accordingly, each person owning a beneficial interest in a global security must rely on the procedures of DTC and, if that person is not a participant of DTC, on the procedures of the participant through which that person owns its interest, to exercise any rights of a holder under the 1983 Indenture. ML&Co. understands that under existing industry practices, in the event that ML&Co. requests any action of holders or that an owner of a beneficial interest in a global security desires to give or take any action which a holder is entitled to give or take under the 1983 Indenture, DTC would authorize the participants holding the relevant beneficial interests to give or take that action, and those participants would authorize beneficial owners owning through those participants to give or take that action or would otherwise act upon the instructions of beneficial owners. Conveyance of notices and other communications by DTC to participants, by participants to indirect participants and by participants and indirect participants to beneficial owners will be governed by arrangements among them, subject to any statutory or regulatory requirements as may be in effect from time to time.

DTC Procedures

The following is based on information furnished by DTC:

DTC will act as securities depository for the Notes. The Notes will be issued as fully registered securities registered in the name of Cede & Co. (DTC’s partnership nominee). One or more fully registered global securities will be issued for the Notes in the aggregate original public offering price of such issue, and will be deposited with DTC.

DTC is a limited-purpose trust company organized under the New York Banking Law, a “banking organization” within the meaning of the New York Banking Law, a member of the Federal Reserve System, a “clearing corporation” within the meaning of the New York Uniform Commercial Code, and a clearing agency

Table of Contents

registered pursuant to the provisions of Section 17A of the Securities Exchange Act of 1934, as amended. DTC holds securities that its participants deposit with DTC. DTC also facilitates the settlement among participants of securities transactions, such as transfers and pledges, in deposited securities through electronic computerized book-entry changes in participant's accounts, thereby eliminating the need for physical movement of securities certificates. Direct participants of DTC include securities brokers and dealers, banks, trust companies, clearing corporations and certain other organizations. DTC is owned by a number of its direct participants and by the NYSE, the AMEX, and the National Association of Securities Dealers, Inc. Access to DTC's system is also available to others such as securities brokers and dealers, banks and trust companies that clear through or maintain a custodial relationship with a direct participant, either directly or indirectly. The rules applicable to DTC and its participants are on file with the SEC.

Purchases of the Notes under DTC's system must be made by or through direct participants, which will receive a credit for the Notes on DTC's records. The ownership interest of each beneficial owner is in turn to be recorded on the records of direct and indirect participants. Beneficial owners will not receive written confirmation from DTC of their purchase, but beneficial owners are expected to receive written confirmations providing details of the transaction, as well as periodic statements of their holdings, from the direct or indirect participants through which the beneficial owner entered into the transaction. Transfers of ownership interests in the Notes are to be made by entries on the books of participants acting on behalf of beneficial owners.

To facilitate subsequent transfers, all Notes deposited with DTC are registered in the name of DTC's partnership nominee, Cede & Co. The deposit of the Notes with DTC and their registration in the name of Cede & Co. effect no change in beneficial ownership. DTC has no knowledge of the actual beneficial owners of the Notes; DTC's records reflect only the identity of the direct participants to whose accounts such Notes are credited, which may or may not be the beneficial owners. The participants will remain responsible for keeping account of their holdings on behalf of their customers.

Conveyance of notices and other communications by DTC to direct participants, by direct participants to indirect participants, and by direct participants and indirect participants to beneficial owners will be governed by arrangements among them, subject to any statutory or regulatory requirements as may be in effect from time to time.

Neither DTC nor Cede & Co. will consent or vote with respect to the Notes. Under its usual procedures, DTC mails an omnibus proxy to ML&Co. as soon as possible after the applicable record date. The omnibus proxy assigns Cede & Co.'s consenting or voting rights to those direct participants identified in a listing attached to the omnibus proxy to whose accounts the Notes are credited on the record date.

Principal, premium, if any, and/or interest, if any, payments made in cash on the Notes will be made in immediately available funds to DTC. DTC's practice is to credit direct participants' accounts on the applicable payment date in accordance with their respective holdings shown on the depository's records unless DTC has reason to believe that it will not receive payment on that date. Payments by participants to beneficial owners will be governed by standing instructions and customary practices, as is the case with securities held for the accounts of customers in bearer form or registered in "street name", and will be the responsibility of that participant and not of DTC, the trustee or ML&Co., subject to any statutory or regulatory requirements as may be in effect from time to time. Payment of principal, premium, if any, and/or interest, if any, to DTC is the responsibility of ML&Co. or the trustee, disbursement of those payments to direct participants shall be the responsibility of DTC, and disbursement of any payments to the beneficial owners will be the responsibility of direct participants and indirect participants.

Table of Contents

Exchange for Certificated Securities

If:

- the depository is at any time unwilling or unable to continue as depository and a successor depository is not appointed by ML&Co. within 60 days,
- ML&Co. executes and delivers to the trustee a company order to the effect that the global securities shall be exchangeable, or
- an Event of Default under the 1983 Indenture has occurred and is continuing with respect to the Notes,

the global securities will be exchangeable for Notes in definitive form of like tenor in whole units and multiples of units. The definitive Notes will be registered in the name or names as the depository shall instruct the trustee. It is expected that instructions may be based upon directions received by the depository from participants with respect to ownership of beneficial interests in the global securities.

DTC may discontinue providing its services as securities depository with respect to the Notes at any time by giving reasonable notice to ML&Co. or the trustee. Under these circumstances, in the event that a successor securities depository is not obtained, Note certificates are required to be printed and delivered.

ML&Co. may decide to discontinue use of the system of book-entry transfers through DTC or a successor securities depository. In that event, Note certificates will be printed and delivered.

The information in this section concerning DTC and DTC's system has been obtained from sources that ML&Co. believes to be reliable, but ML&Co. takes no responsibility for its accuracy.

Same-Day Settlement and Payment

Settlement for the Notes will be made by the underwriter in immediately available funds. ML&Co. will make all payments of the Redemption Amount in immediately available funds so long as the Notes are maintained in book-entry form.

THE INDEX

Unless otherwise stated, all information herein on the Index is derived from Dow Jones or other publicly available sources. This information reflects the policies of Dow Jones as stated in the publicly available sources and the policies are subject to change by Dow Jones. Dow Jones is under no obligation to continue to publish the Index and may discontinue publication of the Index at any time.

The Index is a price-weighted index, i.e., the weight of a component stock in the Index is based on its price per share rather than the total market capitalization of the issuer of the component stock, comprised of 30 common stocks chosen by the editors of the WSJ as representative of the broad market of U.S. industry. The corporations represented in the Index tend to be leaders within their respective industries and their stocks are typically widely held by individuals and institutional investors. Changes in the composition of the Index are made entirely by the editors of the WSJ without consultation with the corporations represented in the Index, any stock exchange, any official agency or ML&Co. Changes to the common stocks included in the Index tend to be made infrequently. Historically, most substitutions have been the result of mergers, but from time to time, changes may be made to achieve what the editors of the WSJ deem to be a more accurate representation of the broad market of U.S. industry. In choosing a new corporation for the Index, the editors of the WSJ look for leading industrial companies with a successful history of growth and wide interest among investors. The component stocks of the Index may be changed at any time for any reason. Dow Jones, publisher of the WSJ, is not affiliated with ML&Co. and has not participated in any way in the creation of the Notes.

The Index initially consisted of 12 common stocks and was first published in the WSJ in 1896. The Index was increased to include 20 common stocks in 1916 and to 30 common stocks in 1928. The number of common stocks in the Index has remained at 30 since 1928, and, in an effort to maintain continuity, the constituent corporations represented in the Index have been changed on a relatively infrequent basis.

The value of the Index is the sum of the primary exchange prices of each of the 30 common stocks included in the Index, divided by a divisor that is designed to provide a meaningful continuity in the value of the Index. Because the Index is price-weighted, stock splits or changes in the component stocks could result in distortions in the Index value. In order to prevent these distortions related to extrinsic factors, the divisor is changed in accordance with a mathematical formula that reflects adjusted proportions within the Index. The current divisor of the Index is published daily in the WSJ and other publications. In addition, other statistics based on the Index may be found in a variety of publicly available sources.

ML&Co. or its affiliates may currently or from time to time in the future engage in business with one or more of the issuers of the component stocks of the Index, including extending loans to, or making equity investments in, the issuers or providing advisory services to the issuers, including merger and acquisition advisory services. In the course of its business, ML&Co. or its affiliates may acquire non-public information with respect to the issuers. ML&Co. does not make any representation to any purchaser of the Notes with respect to any matters whatsoever relating to the issuers. Any prospective purchaser of the Notes should undertake an independent investigation of the issuers of the component stocks of the Index as in its judgment is appropriate to make an informed decision about an investment in the Notes. The composition of the Index does not reflect any investment or sell recommendations of ML&Co. or its affiliates.

Table of Contents

The following table presents the listing symbol, industry group, price per share, total number of shares outstanding and market capitalization for each of the component stocks in the Index based on publicly available information as of November 25, 2002.

Components of the Index

Issuer of Component Stock(1)	Symbol	Industry	Price Per Share	Total Shares Outstanding In Millions	Market Capitalization In Millions
Alcoa Inc.	AA	Aluminum	\$ 24.55	844.270	\$ 20,727
American Express Company	AXP	Diversified Financial	\$ 39.38	1,314.319	\$ 51,758
AT&T Corp	T	Fixed-Line Communications	\$ 27.99	770.385	\$ 21,563
The Boeing Company	BA	Aerospace	\$ 33.49	799.341	\$ 26,770
Caterpillar Inc.	CAT	Heavy Machinery	\$ 48.68	344.182	\$ 16,755
Citigroup Inc.	C	Diversified Financial	\$ 38.65	5,056.768	\$ 195,444
The Coca-Cola Company	KO	Soft Drinks	\$ 45.11	2,479.113	\$ 111,833
E.I. du Pont de Nemours and Company	DD	Chemicals Commodity	\$ 43.70	993.480	\$ 43,415
Eastman Kodak Company	EK	Recreational Products & Services	\$ 36.82	291.769	\$ 10,743
Exxon Mobil Corporation	XOM	Oil Companies Major	\$ 34.60	6,728.898	\$ 232,820
General Electric Company	GE	Industrial Diversified	\$ 26.80	9,951.061	\$ 266,688
General Motors Corporation	GM	Automobile Manufacturers	\$ 38.70	560.335	\$ 21,685
Hewlett-Packard Company	HPQ	Computers	\$ 19.29	3,051.466	\$ 58,863
The Home Depot, Inc.	HD	Retailers Specialty	\$ 25.45	2,356.146	\$ 59,964
Honeywell International Inc.	HON	Industrial Diversified	\$ 24.50	821.051	\$ 20,116
Intel Corporation	INTC	Semiconductors	\$ 20.48	6,625.000	\$ 135,680
International Business Machines Corp.	IBM	Computers	\$ 86.20	1,690.088	\$ 145,686
International Paper Co.	IP	Paper Products	\$ 37.45	479.679	\$ 17,964
JPMorgan Chase & Co.	JPM	Banks Ex-S&L	\$ 24.95	1,996.511	\$ 49,813
Johnson & Johnson	JNJ	Pharmaceuticals	\$ 58.64	2,970.582	\$ 174,195
McDonald's Corporation	MCD	Restaurants	\$ 18.23	1,269.313	\$ 23,140
Merck & Co., Inc.	MRK	Pharmaceuticals	\$ 60.31	2,245.556	\$ 135,429
Microsoft Corporation	MSFT	Software	\$ 58.21	5,346.450	\$ 311,217
3M Company	MMM	Industrial Diversified	\$ 128.65	390.197	\$ 50,199
Philip Morris Companies Inc.	MO	Tobacco	\$ 37.57	2,068.629	\$ 77,718
The Procter & Gamble Company	PG	Household Products Nondurable	\$ 85.64	1,299.299	\$ 111,272
SBC Communications Inc.	SBC	Fixed-Line Communications	\$ 28.40	3,320.204	\$ 94,294
United Technologies Corporation	UTX	Aerospace	\$ 64.81	473.665	\$ 30,698
Wal-Mart Stores, Inc.	WMT	Retailers Broadline	\$ 53.82	4,422.645	\$ 238,027
The Walt Disney Company	DIS	Broadcasting	\$ 19.64	2,040.923	\$ 40,084
				Average Market Capitalization:	\$ 93,152

(1) The inclusion of a component stock in the portfolio should not be considered a recommendation to buy or sell that stock, and neither ML&Co. nor any of its affiliates make any representation to any purchaser of the Notes as to the performance of the portfolio or any component stock. Beneficial owners of the Notes will not have any right to the component stocks or any dividends paid on the component stocks.

License Agreement

“Dow Jones”, “Dow Jones Industrial AverageSM”, and “DJIASM” are service marks of Dow Jones & Company, Inc. Dow Jones has no relationship to MLPF&S or ML&Co., other than the licensing of the Dow Jones Industrial AverageSM and its service marks for use in connection with the Notes.

Dow Jones does not:

- Sponsor, endorse, sell or promote the Notes.
- Recommend that any person invest in the Notes or any other securities.

Table of Contents

- Have any responsibility or liability for or make any decisions about the timing, amount or pricing of the Notes.
- Have any responsibility or liability for the administration, management or marketing of the Notes.
- Consider the needs of the Notes or the owners of the Notes in determining, composing or calculating the Index or have any obligation to do so.

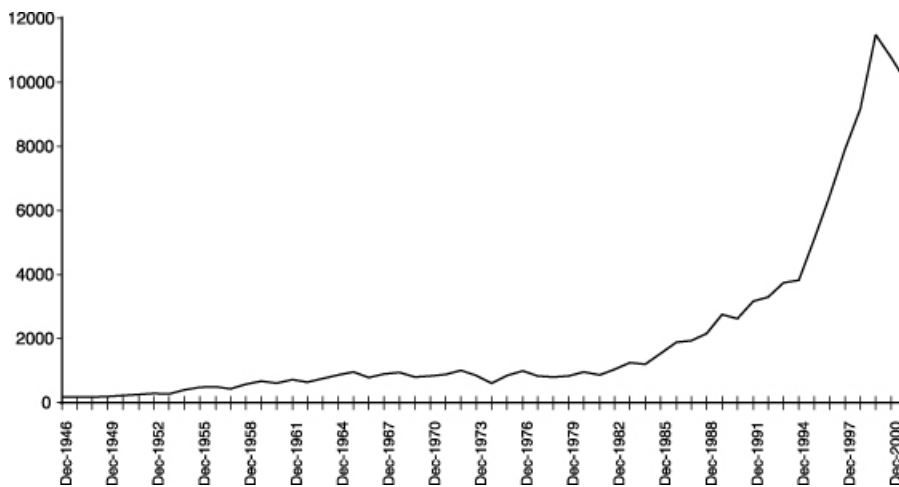
Dow Jones will not have any liability in connection with the Notes. Specifically,

- Dow Jones does not make any warranty, express or implied, and Dow Jones disclaims any warranty about:
 - The results to be obtained by the Notes, the owner of the Notes or any other person in connection with the use of the Index and the data included in the Index;
- The accuracy or completeness of the Index and its data;
- The merchantability and the fitness for a particular purpose or use of the Index and its data;
- Dow Jones will have no liability for any errors, omissions or interruptions in the Index or its data;
- Under no circumstances will Dow Jones be liable for any lost profits or indirect, punitive, special or consequential damages or losses, even if Dow Jones knows that they might occur.

The licensing agreement between MLPF&S and Dow Jones is solely for their benefit and not for the benefit of the owners of the Notes or any other third parties.

Historical Data on the Index

The following graph sets forth the closing values of the Index on the last business day of each year from 1946 through 2001. The historical experience of the Index should not be taken as an indication of future performance and no assurance can be given that the value of the Index will not decline and thereby reduce the Redemption Amount payable to beneficial owners of the Notes at maturity.



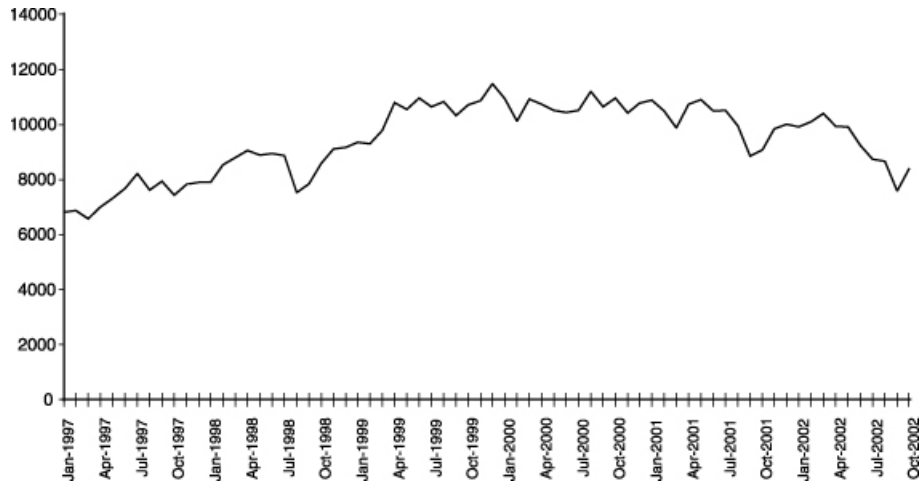
Month-End Closing Values of the Index

The following table sets forth the closing level of the Index at the end of each month, in the period from January 1997 through October 2002. This historical data on the Index is not indicative of the future performance of the Index or what the value of the Notes may be. Any historical upward or downward trend in the closing level of the Index during any period set forth below is not any indication that the Index is more or less likely to decline at any time during the term of the Notes.

	1997	1998	1999	2000	2001	2002
January	6,813.1	7,906.5	9,358.8	10,940.5	10,887.4	9,920.0
February	6,877.7	8,545.7	9,306.6	10,128.3	10,495.3	10,106.1
March	6,583.5	8,799.8	9,786.2	10,921.9	9,878.8	10,403.9
April	7,009.0	9,063.4	10,789.0	10,733.9	10,735.0	9,946.2
May	7,331.0	8,900.0	10,559.7	10,522.3	10,911.9	9,925.3
June	7,672.8	8,952.0	10,970.8	10,447.9	10,502.4	9,243.3
July	8,222.6	8,883.3	10,655.2	10,522.0	10,522.8	8,736.6
August	7,622.4	7,539.1	10,829.3	11,215.1	9,949.8	8,663.5
September	7,945.3	7,842.6	10,337.0	10,650.9	8,847.6	7,591.9
October	7,442.1	8,592.1	10,729.9	10,971.1	9,075.1	8,397.0
November	7,823.1	9,116.6	10,877.8	10,414.5	9,851.6	
December	7,908.3	9,181.4	11,497.1	10,786.9	10,021.5	

The closing value of the Index on November 25, 2002 was 8,849.40.

The following graph plots the historical month-end performance of the Index from January 1997 through October 2002. Past movements of the Index are not necessarily indicative of future Index values.



UNITED STATES FEDERAL INCOME TAXATION

The following discussion is based upon the opinion of Sidley Austin Brown & Wood LLP, counsel to ML&Co. (“Tax Counsel”). As the law applicable to the U.S. federal income taxation of instruments such as the Notes is technical and complex, the discussion below necessarily represents only a general summary. The following summary is based upon laws, regulations, rulings and decisions now in effect, all of which are subject to change (including changes in effective dates) or possible differing interpretations. It deals only with Notes held as capital assets and does not purport to deal with persons in special tax situations, such as financial institutions, insurance companies, regulated investment companies, dealers in securities or currencies, persons holding Notes as a hedge against currency risks, as a position in a “straddle” or as part of a “hedging” or “conversion” transaction for tax purposes, or persons whose functional currency is not the United States dollar. It also does not deal with holders other than original purchasers (except where otherwise specifically noted). Persons considering the purchase of the Notes should consult their own tax advisors concerning the application of U.S. federal income tax laws to their particular situations as well as any consequences of the purchase, ownership and disposition of the Notes arising under the laws of any other taxing jurisdiction.

As used herein, the term “U.S. Holder” means a beneficial owner of a Note that is for U.S. federal income tax purposes (i) a citizen or resident of the United States, (ii) a corporation or a partnership (including an entity treated as a corporation or a partnership for U.S. federal income tax purposes) created or organized in or under the laws of the United States, any state thereof or the District of Columbia (unless, in the case of a partnership, Treasury regulations are adopted that provide otherwise), (iii) an estate whose income is subject to U.S. federal income tax regardless of its source, (iv) a trust if a court within the United States is able to exercise primary supervision over the administration of the trust and one or more United States persons have the authority to control all substantial decisions of the trust, or (v) any other person whose income or gain in respect of a Note is effectively connected with the conduct of a United States trade or business. Certain trusts not described in clause (iv) above in existence on August 20, 1996, that elect to be treated as United States persons will also be U.S. Holders for purposes of the following discussion. As used herein, the term “Non-U.S. Holder” means a beneficial owner of a Note that is not a U.S. Holder.

General

There are no statutory provisions, regulations, published rulings or judicial decisions addressing or involving the characterization and treatment, for U.S. federal income tax purposes, of the Notes or securities with terms substantially the same as the Notes. Accordingly, the proper U.S. federal income tax characterization and treatment of the Notes is uncertain. Pursuant to the terms of the Notes, ML&Co. and every holder of a Note agree (in the absence of an administrative determination or judicial ruling to the contrary) to characterize a Note for all tax purposes as a pre-paid cash-settled forward contract linked to the value of the Index. In the opinion of Tax Counsel, such characterization and tax treatment of the Notes, although not the only reasonable characterization and tax treatment, is based on reasonable interpretations of law currently in effect and, even if successfully challenged by the Internal Revenue Service (the “IRS”), will not result in the imposition of penalties. The treatment of the Notes described above is not, however, binding on the IRS or the courts. No statutory, judicial or administrative authority directly addresses the characterization of the Notes or instruments similar to the Notes for U.S. federal income tax purposes, and no ruling is being requested from the IRS with respect to the Notes.

Due to the absence of authorities that directly address instruments that are similar to the Notes, significant aspects of the U.S. federal income tax consequences of an investment in the Notes are not certain, and no assurance can be given that the IRS or the courts will agree with the characterization described above. Accordingly, prospective purchasers are urged to consult their own tax advisors regarding the U.S. federal income tax consequences of an investment in the Notes (including alternative characterizations of the Notes) and with respect to any tax consequences arising under the laws of any state, local or foreign taxing jurisdiction. Unless otherwise stated, the following discussion is based on the assumption that the treatment described above is accepted for U.S. federal income tax purposes.

[Table of Contents](#)

Tax Treatment of the Notes

Assuming the characterization of the Notes as set forth above, Tax Counsel believes that the following U.S. federal income tax consequences should result.

Tax Basis. A U.S. Holder's tax basis in a Note will equal the amount paid by the U.S. Holder to acquire the Note.

Payment on the Maturity Date. Upon the receipt of cash at maturity of the Notes, a U.S. Holder will recognize gain or loss. The amount of such gain or loss will be the extent to which the amount of the cash received differs from the U.S. Holder's tax basis in the Note. It is uncertain whether any such gain or loss would be treated as ordinary income or loss or capital gain or loss. Absent a future clarification in current law (by an administrative determination or judicial ruling), where required, ML&Co. intends to report any such gain or loss to the IRS in a manner consistent with the treatment of such gain or loss as capital gain or loss. If such gain or loss is treated as capital gain or loss, then any such gain or loss will generally be long-term capital gain or loss, as the case may be, if the U.S. Holder held the Note for more than one year at maturity. The deductibility of capital losses is subject to certain limitations.

Sale or Exchange of the Notes. Upon a sale or exchange of a Note prior to the maturity of the Notes, a U.S. Holder will generally recognize capital gain or loss equal to the difference between the amount realized on such sale or exchange and such U.S. Holder's tax basis in the Note so sold or exchanged. Capital gain or loss will generally be long-term capital gain or loss if the U.S. Holder held the Note for more than one year at the time of disposition. As discussed above, the deductibility of capital losses is subject to certain limitations.

Possible Alternative Tax Treatments of an Investment in the Notes

Due to the absence of authorities that directly address the proper characterization of the Notes, no assurance can be given that the IRS will accept, or that a court will uphold, the characterization and tax treatment described above. In particular, the IRS could seek to analyze the U.S. federal income tax consequences of owning the Notes under Treasury regulations governing contingent payment debt instruments (the "Contingent Payment Regulations").

If the IRS were successful in asserting that the Contingent Payment Regulations applied to the Notes, the timing and character of income thereon would be significantly affected. Among other things, a U.S. Holder would be required to accrue original issue discount on the Notes every year at a "comparable yield" for us, determined at the time of issuance of the Notes. Furthermore, any gain realized at maturity or upon a sale or other disposition of the Notes would generally be treated as ordinary income, and any loss realized at maturity or upon a sale or other disposition of the Notes would be treated as ordinary loss to the extent of the U.S. Holder's prior accruals of original issue discount and capital loss thereafter.

Even if the Contingent Payment Regulations do not apply to the Notes, other alternative U.S. federal income tax characterizations or treatments of the Notes may also be possible, and if applied could also affect the timing and the character of the income or loss with respect to the Notes. Accordingly, prospective purchasers are urged to consult their tax advisors regarding the U.S. federal income tax consequences of an investment in the Notes.

Non-U.S. Holders

Based on the treatment of each Note as a pre-paid cash-settled forward contract linked to the value of the Index, in the case of a non-U.S. Holder, a payment made with respect to a Note on the maturity date will not be subject to United States withholding tax, provided that such non-U.S. Holder complies with applicable certification requirements and that such payments are not effectively connected with a United States trade or

Table of Contents

business of such non-U.S. Holder. Any capital gain realized upon the sale or other disposition of a Note by a non-U.S. Holder will generally not be subject to U.S. federal income tax if (i) such gain is not effectively connected with a United States trade or business of such non-U.S. Holder and (ii) in the case of an individual non-U.S. Holder, such individual is not present in the United States for 183 days or more in the taxable year of the sale or other disposition, or the gain is not attributable to a fixed place of business maintained by such individual in the United States and such individual does not have a “tax home” (as defined for U.S. federal income tax purposes) in the United States.

As discussed above, alternative characterizations of the Notes for U.S. federal income tax purposes are possible. Should an alternative characterization of the Notes, by reason of a change or clarification of the law, by regulation or otherwise, cause payments with respect to the Notes to become subject to withholding tax, ML&Co. will withhold tax at the applicable statutory rate. Prospective non-U.S. Holders of the Notes should consult their own tax advisors in this regard.

Backup Withholding and Information Reporting

A beneficial owner of a Note may be subject to information reporting and to backup withholding at the applicable statutory rate of U.S. federal income tax on certain amounts paid to the beneficial owner unless such beneficial owner provides proof of an applicable exemption or a correct taxpayer identification number, and otherwise complies with applicable requirements of the backup withholding rules.

Any amounts withheld under the backup withholding rules from a payment to a beneficial owner would be allowed as a refund or a credit against such beneficial owner’s U.S. federal income tax provided the required information is furnished to the IRS.

ERISA CONSIDERATIONS

Each fiduciary of a pension, profit-sharing or other employee benefit plan (a “plan”) subject to the Employee Retirement Income Security Act of 1974, as amended (“ERISA”), should consider the fiduciary standards of ERISA in the context of the plan’s particular circumstances before authorizing an investment in the Notes. Accordingly, among other factors, the fiduciary should consider whether the investment would satisfy the prudence and diversification requirements of ERISA and would be consistent with the documents and instruments governing the plan, and whether the investment would involve a prohibited transaction under Section 406 of ERISA or Section 4975 of the Internal Revenue Code (the “Code”).

Section 406 of ERISA and Section 4975 of the Code prohibit plans, as well as individual retirement accounts and Keogh plans subject to Section 4975 of the Internal Revenue Code (also “plans”) from engaging in certain transactions involving “plan assets” with persons who are “parties in interest” under ERISA or “disqualified persons” under the Code (“parties in interest”) with respect to the plan or account. A violation of these prohibited transaction rules may result in civil penalties or other liabilities under ERISA and/or an excise tax under Section 4975 of the Code for those persons, unless exemptive relief is available under an applicable statutory, regulatory or administrative exemption. Certain employee benefit plans and arrangements including those that are governmental plans (as defined in section 3(32) of ERISA), certain church plans (as defined in Section 3(33) of ERISA) and foreign plans (as described in Section 4(b)(4) of ERISA) (“non-ERISA arrangements”) are not subject to the requirements of ERISA or Section 4975 of the Code but may be subject to similar provisions under applicable federal, state, local, foreign or other regulations, rules or laws (“similar laws”).

The acquisition of the Notes by a plan with respect to which we, MLPF&S, or certain of our affiliates is or becomes a party in interest may constitute or result in prohibited transaction under ERISA or Section 4975 of the Code, unless those Notes are acquired pursuant to and in accordance with an applicable exemption. The U.S.

Table of Contents

Department of Labor has issued five prohibited transaction class exemptions, or “PTCEs”, that may provide exemptive relief if required for direct or indirect prohibited transactions that may arise from the purchase or holding of the Notes. These exemptions are:

- (1) PTCE 84-14, an exemption for certain transactions determined or effected by independent qualified professional asset managers;
- (2) PTCE 90-1, an exemption for certain transactions involving insurance company pooled separate accounts;
- (3) PTCE 91-38, an exemption for certain transactions involving bank collective investment funds;
- (4) PTCE 95-60, an exemption for transactions involving certain insurance company general accounts; and
- (5) PTCE 96-23, an exemption for plan asset transactions managed by in-house asset managers.

The Notes may not be purchased or held by (1) any plan, (2) any entity whose underlying assets include “plan assets” by reason of any plan’s investment in the entity (a “plan asset entity”) or (3) any person investing “plan assets” of any plan, unless in each case the purchaser or holder is eligible for the exemptive relief available under one or more of the PTCEs listed above or another applicable similar exemption. Any purchaser or holder of the Notes or any interest in the Notes will be deemed to have represented by its purchase and holding of the Notes that it either (1) is not a plan or a plan asset entity and is not purchasing those Notes on behalf of or with “plan assets” of any plan or plan asset entity or (2) with respect to the purchase or holding, is eligible for the exemptive relief available under any of the PTCEs listed above or another applicable exemption. In addition, any purchaser or holder of the Notes or any interest in the Notes which is a non-ERISA arrangement will be deemed to have represented by its purchase and holding of the Notes that its purchase and holding will not violate the provisions of any similar law.

Due to the complexity of these rules and the penalties that may be imposed upon persons involved in non-exempt prohibited transactions, it is important that fiduciaries or other persons considering purchasing the Notes on behalf of or with “plan assets” of any plan, plan asset entity or non-ERISA arrangement consult with their counsel regarding the availability of exemptive relief under any of the PTCEs listed above or any other applicable exemption, or the potential consequences of any purchase or holding under similar laws, as applicable.

USE OF PROCEEDS AND HEDGING

The net proceeds from the sale of the Notes will be used as described under “Use of Proceeds” in the accompanying prospectus and to hedge market risks of ML&Co. associated with its obligation to pay the Redemption Amount.

WHERE YOU CAN FIND MORE INFORMATION

We file reports, proxy statements and other information with the SEC. Our SEC filings are also available over the Internet at the SEC’s web site at <http://www.sec.gov>. The address of the SEC’s Internet site is provided solely for the information of prospective investors and is not intended to be an active link. You may also read and copy any document we file at the SEC’s public reference rooms in Washington, D.C., and New York, New York. Please call the SEC at 1-800-SEC-0330 for more information on the public reference rooms and their copy charges. You may also inspect our SEC reports and other information at the New York Stock Exchange, Inc., 20 Broad Street, New York, New York 10005.

[Table of Contents](#)

We have filed a registration statement on Form S-3 with the SEC covering the Notes and other securities. For further information on ML&Co. and the Notes, you should refer to our registration statement and its exhibits. The prospectus accompanying this prospectus supplement summarizes material provisions of contracts and other documents that we refer you to. Because the prospectus may not contain all the information that you may find important, you should review the full text of these documents. We have included copies of these documents as exhibits to our registration statement.

You should rely only on the information contained or incorporated by reference in this prospectus supplement and the accompanying prospectus. We have not, and the underwriter has not, authorized any other person to provide you with different information. If anyone provides you with different or inconsistent information, you should not rely on it. We are not, and the underwriter is not, making an offer to sell these securities in any jurisdiction where the offer or sale is not permitted.

You should assume that the information appearing in this prospectus supplement and the accompanying prospectus is accurate as of the date on the front cover of this prospectus supplement only. Our business, financial condition and results of operations may have changed since that date.

UNDERWRITING

MLPF&S, the underwriter of the offering, has agreed, subject to the terms and conditions of the underwriting agreement and a terms agreement, to purchase from ML&Co. \$70,000,000 aggregate original public offering price of Notes. The underwriting agreement provides that the obligations of the underwriter are subject to certain conditions and that the underwriter will be obligated to purchase all of the Notes if any are purchased.

The underwriter has advised ML&Co. that it proposes initially to offer all or part of the Notes directly to the public at the offering prices set forth on the cover page of this prospectus supplement. After the initial public offering, the public offering prices may be changed. The underwriter is offering the Notes subject to receipt and acceptance and subject to the underwriter's right to reject any order in whole or in part. Proceeds to be received by ML&Co. will be net of the underwriting discount and expenses payable by ML&Co.

MLPF&S, a broker-dealer subsidiary of ML&Co., is a member of the National Association of Securities Dealers, Inc. and will participate in distributions of the Notes. Accordingly, offerings of the Notes will conform to the requirements of Rule 2720 of the Conduct Rules of the NASD.

The underwriter is permitted to engage in certain transactions that stabilize the price of the Notes. These transactions consist of bids or purchases for the purpose of pegging, fixing or maintaining the price of the Notes.

If the underwriter creates a short position in the Notes in connection with the offering, i.e., if it sells more Notes than are set forth on the cover page of this prospectus supplement, the underwriter may reduce that short position by purchasing Notes in the open market. In general, purchases of a security for the purpose of stabilization or to reduce a short position could cause the price of the security to be higher than it might be in the absence of these purchases. "Naked" short sales are sales in excess of the underwriter's over-allotment option or, where no over-allotment option exists, sales in excess of the number of units an underwriter has agreed to purchase from the issuer. Because MLPF&S, as underwriter for the Notes, has no over-allotment option, it would be required to close out a short position in the Notes by purchasing Notes in the open market. Neither ML&Co. nor the underwriter makes any representation or prediction as to the direction or magnitude of any effect that the transactions described above may have on the price of the Notes. In addition, neither ML&Co. nor the underwriter makes any representation that the underwriter will engage in these transactions or that these transactions, once commenced, will not be discontinued without notice.

MLPF&S may use this prospectus supplement and the accompanying prospectus for offers and sales related to market-making transactions in the Notes. MLPF&S may act as principal or agent in these transactions, and the sales will be made at prices related to prevailing market prices at the time of sale.

VALIDITY OF THE NOTES

The validity of the Notes will be passed upon for ML&Co. and for the underwriter by Sidley Austin Brown & Wood LLP, New York, New York.

EXPERTS

The consolidated financial statements and the related financial statement schedule incorporated in this prospectus supplement by reference from the Annual Report on Form 10-K of Merrill Lynch & Co., Inc. and subsidiaries for the year ended December 28, 2001 have been audited by Deloitte & Touche LLP, independent auditors, as stated in their reports, which are incorporated herein by reference, and have been so incorporated in reliance upon the reports of such firm given upon their authority as experts in accounting and auditing.

With respect to the unaudited condensed consolidated financial statements for the periods ended March 29, 2002 and March 30, 2001, June 28, 2002 and June 29, 2001 and September 27, 2002 and September 28, 2001, which are incorporated herein by reference, Deloitte & Touche LLP have applied limited procedures in accordance with professional standards for a review of such information. However, as stated in their reports included in Merrill Lynch & Co., Inc. and subsidiaries' Quarterly Reports on Form 10-Q for the quarters ended March 29, 2002, June 28, 2002 and September 27, 2002 and incorporated by reference herein, they did not audit and they do not express an opinion on those unaudited condensed consolidated financial statements. Accordingly, the degree of reliance on their reports on such information should be restricted in light of the limited nature of the review procedures applied. Deloitte & Touche LLP are not subject to the liability provisions of Section 11 of the Securities Act of 1933 for their reports on the unaudited condensed consolidated financial statements because those reports are not "reports" or a "part" of the registration statement prepared or certified by an accountant within the meaning of Sections 7 and 11 of the Act.

INDEX OF DEFINED TERMS

	<u>Page</u>
Business Day	S-13
Calculation Day	S-11
Calculation Period	S-11
Capped Value	S-4
Code	S-23
Contingent Payment Regulations	S-22
depository	S-14
Dow Jones	S-5
DTC	S-4
Ending Value	S-4
ERISA	S-23
Index	S-4
Index Business Day	S-11
IRS	S-21
Market Disruption Event	S-12
ML&Co	S-4
MLPF&S	S-4
non-ERISA arrangements	S-23
non-U.S. Holder	S-21
Notes	S-1
parties in interest	S-23
plan	S-23
plan asset entity	S-24
plans	S-23
PTCEs	S-24
Redemption Amount	S-4
similar laws	S-23
Starting Value	S-4
successor index	S-13
Tax Counsel	S-21
U.S. Holder	S-21
WSJ	S-5



7,000,000 Units

Merrill Lynch & Co., Inc.

**Market Recovery NotesSM Linked to the Dow Jones Industrial AverageSM
due January 31, 2005
(the "Notes")**

\$10 original public offering price per unit

PROSPECTUS SUPPLEMENT

Merrill Lynch & Co.

November 25, 2002
